

For Research Use Only

COX6C Recombinant monoclonal antibody, PBS Only (Capture)

Catalog Number:86818-2-PBS



Basic Information

Catalog Number: 86818-2-PBS	GenBank Accession Number: BC000187	Purification Method: Protein A purification
Source: Rabbit	GeneID (NCBI): 1345	CloneNo.: 251865D9
Isotype: IgG	UNIPROT ID: P09669	
Immunogen Catalog Number: AG1982	Full Name: cytochrome c oxidase subunit VIc	
	Calculated MW: 75 aa, 9 kDa	
	Observed MW: 9 kDa	

Applications

Tested Applications:
WB, Cytometric bead array, Indirect ELISA

Species Specificity:
human, mouse, rat

Background Information

Cytochrome c oxidase (COX) is the terminal oxidase in the respiratory chain in human and other mammalian cells. The enzyme is composed of 13 different subunits. COX6C(Cytochrome c oxidase subunit 6C) is one of the nuclear-coded polypeptide chains of cytochrome c oxidase, the terminal oxidase in mitochondrial electron transport.

Storage

Storage:
Store at -80°C.
The product is shipped with ice packs. Upon receipt, store it immediately at -80°C

Storage Buffer:
PBS only, pH7.3

For technical support and original validation data for this product please contact:

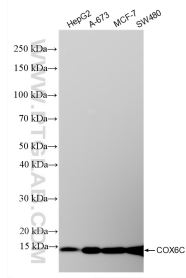
T: 4006900926

E: Proteintech-CN@ptglab.com

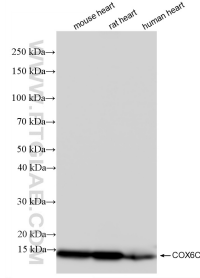
W: ptgcn.com

This product is exclusively available under Proteintech Group brand and is not available to purchase from any other manufacturer.

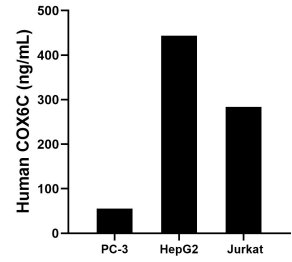
Selected Validation Data



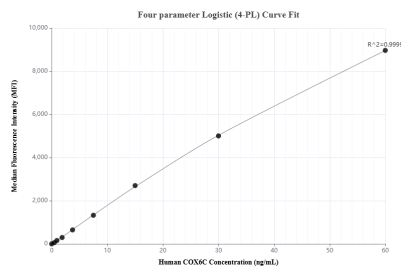
Various lysates were subjected to SDS PAGE followed by western blot with 86818-2-RR (COX6C antibody) at dilution of 1:20000 incubated at room temperature for 1.5 hours. This data was developed using the same antibody clone with 86818-2-PBS in a different storage buffer formulation.



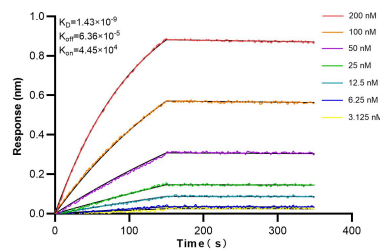
Various lysates were subjected to SDS PAGE followed by western blot with 86818-2-RR (COX6C antibody) at dilution of 1:20000 incubated at room temperature for 1.5 hours. This data was developed using the same antibody clone with 86818-2-PBS in a different storage buffer formulation.



The mean COX6C concentration was determined to be 55.7 ng/mL in PC-3 cell extract based on a 1.1 mg/mL extract load, 443.5 ng/mL in HepG2 cell extract based on a 1.2 mg/mL extract load, 283.8 ng/mL in Jurkat cell extract based on a 1.2 mg/mL extract load.



Cytometric bead array standard curve of MPO2689-1, COX6C Recombinant Matched Antibody Pair, PBS Only. Capture antibody: 86818-2-PBS. Detection antibody: 86818-1-PBS. Standard: Ag1982. Range: 0.469-60 ng/mL



Bilayer interferometry (BLI) kinetic assays of 86818-2-RR against Human COX6C were performed. The affinity constant is 1.43 nM.