

For Research Use Only

ACP1 Recombinant monoclonal antibody

Catalog Number: 86817-1-RR



Basic Information

Catalog Number: 86817-1-RR	GenBank Accession Number: BC007422	Purification Method: Protein A purification
Source: Rabbit	GeneID (NCBI): 52	CloneNo.: 251838C3
Isotype: IgG	UNIPROT ID: P24666	Recommended Dilutions: WB: 1:5000-1:50000 IF/ICC: 1:200-1:800
Immunogen Catalog Number: AG17539	Full Name: acid phosphatase 1, soluble	
	Calculated MW: 158 aa, 18 kDa	
	Observed MW: 18 kDa	

Applications

Tested Applications: WB, IF/ICC, ELISA	Positive Controls:
Species Specificity: human, mouse, rat	WB : HepG2 cells, HEK-293 cells, HeLa cells, K-562 cells, RAW 264.7 cells, NIH/3T3 cells, PC-12 cells
	IF/ICC : 4T1 cells,

Background Information

Acid phosphatase 1 (ACP1) is a low-molecular-weight phosphotyrosine protein phosphatase known to participate in various cellular processes, including signal transduction, proliferation, and metabolism. It functions by dephosphorylating tyrosine-phosphorylated proteins, thereby modulating receptor-mediated signaling pathways.

Storage

Storage:
Store at -20°C. Stable for one year after shipment.
Storage Buffer:
PBS with 0.02% sodium azide and 50% glycerol, pH7.3
Aliquoting is unnecessary for -20°C storage

For technical support and original validation data for this product please contact:

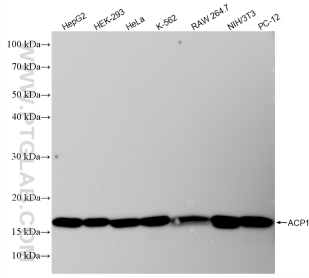
T: 4006900926

E: Proteintech-CN@ptglab.com

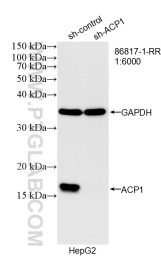
W: ptgcn.com

This product is exclusively available under Proteintech Group brand and is not available to purchase from any other manufacturer.

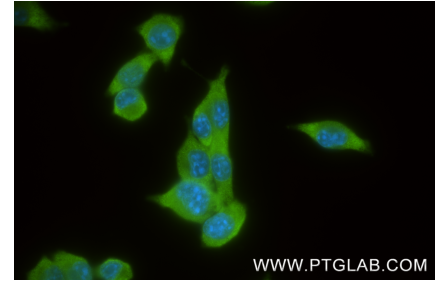
Selected Validation Data



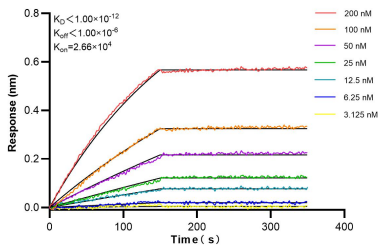
Various lysates were subjected to SDS PAGE followed by western blot with 86817-1-RR (ACP1 antibody) at dilution of 1:10000 incubated at room temperature for 1.5 hours.



WB result of ACP1 antibody (86817-1-RR; 1:6000; incubated at room temperature for 1.5 hours) with sh-Control and sh-ACP1 transfected HepG2 cells.



Immunofluorescent analysis of (4% PFA) fixed 4T1 cells using ACP1 antibody (86817-1-RR, Clone: 251838C3) at dilution of 1:400 and CoraLite@488-Conjugated Goat Anti-Rabbit IgG(H+L) (SA00013-2).



Biolayer interferometry (BLI) kinetic assays of 86817-1-RR against Human ACP1 were performed. The affinity constant is below 1 pM.