

For Research Use Only

# iPLA2 Recombinant monoclonal antibody

Catalog Number: 86812-1-RR



## Basic Information

Catalog Number:

86812-1-RR

Source:

Rabbit

Isotype:

IgG

Immunogen Catalog Number:

AG36873

GenBank Accession Number:

BC036742

GeneID (NCBI):

8398

UNIPROT ID:

O60733

Full Name:

phospholipase A2, group VI (cytosolic, calcium-independent)

Calculated MW:

90 kDa

Observed MW:

85-90 kDa

Purification Method:

Protein A purification

CloneNo.:

251854E4

Recommended Dilutions:

WB: 1:1000-1:6000

## Applications

Tested Applications:

WB, ELISA

Species Specificity:

human, mouse, rat

Positive Controls:

WB: mouse testis tissue, rat testis tissue, rat liver tissue

## Background Information

PLA2G6, also named as PLPLA9, iPLA2, is involved in the remodeling of membranes allowing arachidonic acid to be placed in the proper position in phospholipids for stimulated release. It has been implicated in normal phospholipid remodeling, nitric oxide-induced or vasopressin-induced arachidonic acid release and in leukotriene and prostaglandin production.

## Storage

Storage:

Store at -20°C. Stable for one year after shipment.

Storage Buffer:

PBS with 0.02% sodium azide and 50% glycerol, pH7.3

Aliquoting is unnecessary for -20°C storage

For technical support and original validation data for this product please contact:

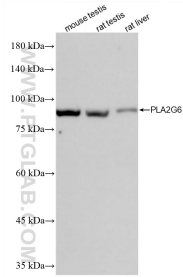
T: 4006900926

E: [Proteintech-CN@ptglab.com](mailto:Proteintech-CN@ptglab.com)

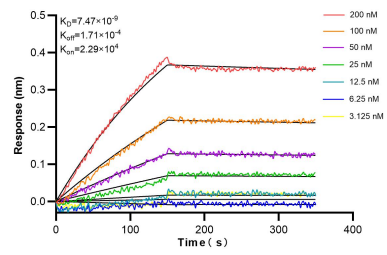
W: [ptgcn.com](http://ptgcn.com)

This product is exclusively available under Proteintech Group brand and is not available to purchase from any other manufacturer.

## Selected Validation Data



Various lysates were subjected to SDS PAGE followed by western blot with 86812-1-RR (iPLA2 antibody) at dilution of 1:3000 incubated at room temperature for 1.5 hours.



Biolayer interferometry (BLI) kinetic assays of 86812-1-RR against Human iPLA2 were performed. The affinity constant is 7.47 nM.