

For Research Use Only

LRRN4 Recombinant monoclonal antibody, PBS Only (Capture)

Catalog Number: 86810-2-PBS



Basic Information

Catalog Number: 86810-2-PBS	GenBank Accession Number: BC019612	Purification Method: Protein A purification
Source: Rabbit	GeneID (NCBI): 164312	CloneNo.: 251762D12
Isotype: IgG	UNIPROT ID: Q8WUT4	
Immunogen Catalog Number: AG22866	Full Name: leucine rich repeat neuronal 4	
	Calculated MW: 740 aa, 79 kDa	

Applications

Tested Applications:
Cytometric bead array, Indirect ELISA

Species Specificity:
human

Background Information

Storage

Storage:
Store at -80°C.
The product is shipped with ice packs. Upon receipt, store it immediately at -80°C

Storage Buffer:
PBS only, pH7.3

For technical support and original validation data for this product please contact:

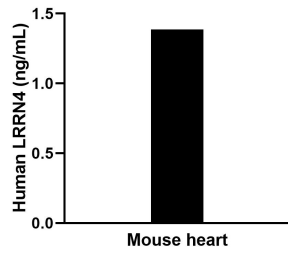
T: 4006900926

E: Proteintech-CN@ptglab.com

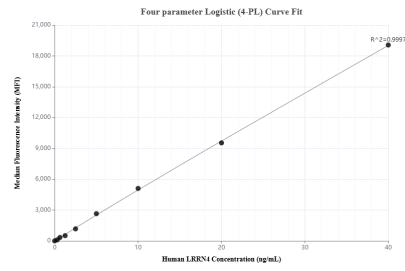
W: ptgcn.com

This product is exclusively available under Proteintech Group brand and is not available to purchase from any other manufacturer.

Selected Validation Data



The mean LRRN4 concentration was determined to be 1.4 ng/mL in Mouse heart tissue extract based on a 7.1 mg/mL extract load.



Cytometric bead array standard curve of MP02688-1, LRRN4 Recombinant Matched Antibody Pair, PBS Only. Capture antibody: 86810-2-PBS. Detection antibody: 86810-1-PBS. Standard: Ag22866. Range: 0.312-40 ng/mL.