

For Research Use Only

# Rat Serpin A12 Recombinant monoclonal antibody, PBS Only (Detector)

Catalog Number: 86801-1-PBS



## Basic Information

<b>Catalog Number:</b> 86801-1-PBS	<b>GenBank Accession Number:</b> GeneID (NCBI): 191570 UNIPROT ID: Q8R4Z1 Full Name: serine (or cysteine) peptidase inhibitor, clade A (alpha-1 antiproteinase, antitrypsin), member 12 Calculated MW: 48 kDa	<b>Purification Method:</b> Protein A purification CloneNo.: 251279E6
<b>Source:</b> Rabbit		
<b>Isotype:</b> IgG		
<b>Immunogen Catalog Number:</b> EG3407		

## Applications

**Tested Applications:**  
Sandwich ELISA, Indirect ELISA  
**Species Specificity:**  
rat

## Background Information

### Storage

**Storage:**  
Store at -80°C.  
**The product is shipped with ice packs. Upon receipt, store it immediately at -80°C**  
**Storage Buffer:**  
PBS only, pH7.3

For technical support and original validation data for this product please contact:

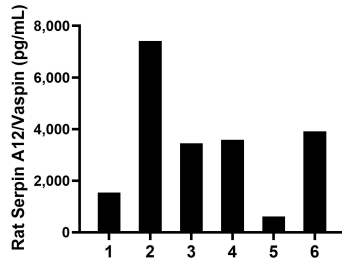
T: 4006900926

E: [Proteintech-CN@ptglab.com](mailto:Proteintech-CN@ptglab.com)

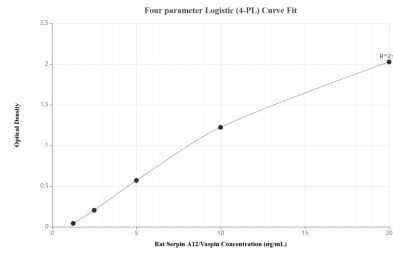
W: [ptgcn.com](http://ptgcn.com)

**This product is exclusively available under Proteintech Group brand and is not available to purchase from any other manufacturer.**

## Selected Validation Data



Serum of eight rats was measured. The Serpin A12/Vaspin concentration of detected samples was determined to be 3,420.9 pg/mL with a range of 618.2-7,418.0 pg/mL.



Sandwich ELISA standard curve of MP02832-1, Rat Serpin A12/Vaspin Recombinant Matched Antibody Pair - PBS only. 86801-2-PBS was coated to a plate as the capture antibody and incubated with serial dilutions of standard Eg3407. 86801-1-PBS was HRP conjugated as the detection antibody. Range: 1.25-20 ng/mL.