

For Research Use Only

AP3S2 Recombinant monoclonal antibody, PBS Only (Detector)

Catalog Number:86795-1-PBS



Basic Information

Catalog Number:

86795-1-PBS

Source:

Rabbit

Isotype:

IgG

Immunogen Catalog Number:

AG7565

GenBank Accession Number:

BC002785

GeneID (NCBI):

10239

UNIPROT ID:

P59780

Full Name:

adaptor-related protein complex 3,
sigma 2 subunit

Calculated MW:

22 kDa

Observed MW:

22 kDa

Purification Method:

Protein A purification

CloneNo.:

251741C11

Applications

Tested Applications:

WB, Sandwich ELISA, Indirect ELISA

Species Specificity:

human, mouse, rat

Background Information

AP3S2 is a 22-kDa protein that belongs to the adaptor complexes small subunit family. AP3S2 is a subunit of the AP-3 complex which is associated with the Golgi region as well as more peripheral structures. Adaptor protein (AP) complexes are cytosolic heterotetramers that mediate the sorting of membrane proteins in the secretory and endocytic pathways. AP-3 complex is composed of two large adaptins (AP3D1 and AP3B1 or AP3B2), a medium adaptin (AP3M1 or AP3M2) and a small adaptin (APS1 or AP3S2).

Storage

Storage:

Store at -80°C.

The product is shipped with ice packs. Upon receipt, store it immediately at -80°C

Storage Buffer:

PBS only, pH7.3

For technical support and original validation data for this product please contact:

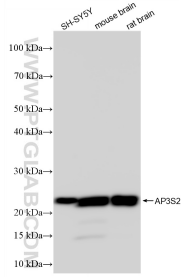
T: 4006900926

E: Proteintech-CN@ptglab.com

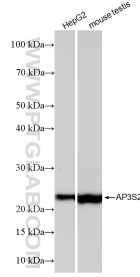
W: ptgcn.com

This product is exclusively available under Proteintech Group brand and is not available to purchase from any other manufacturer.

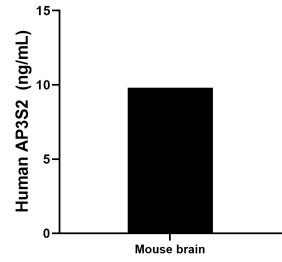
Selected Validation Data



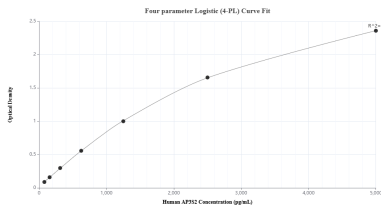
Various lysates were subjected to SDS PAGE followed by western blot with 86795-1-RR (AP3S2 antibody) at dilution of 1:10000 incubated at room temperature for 1.5 hours. This data was developed using the same antibody clone with 86795-1-PBS in a different storage buffer formulation.



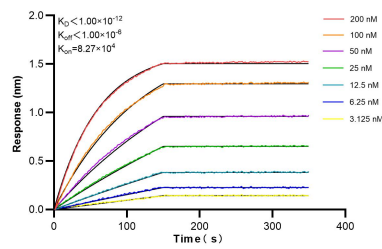
Various lysates were subjected to SDS PAGE followed by western blot with 86795-1-RR (AP3S2 antibody) at dilution of 1:10000 incubated at room temperature for 1.5 hours. This data was developed using the same antibody clone with 86795-1-PBS in a different storage buffer formulation.



The mean AP3S2 concentration was determined to be 9.81 ng/mL in mouse brain tissue extract based on a 2.2 mg/mL extract load.



Sandwich ELISA standard curve of MP02806-1, Human AP3S2 Recombinant Matched Antibody Pair - PBS only. 86795-2-PBS was coated to a plate as the capture antibody and incubated with serial dilutions of standard Ag7565. 86795-1-PBS was HRP conjugated as the detection antibody. Range: 78.1-5000 pg/mL.



Biolayer interferometry (BLI) kinetic assays of 86795-1-RR against Human AP3S2 were performed. The affinity constant is below 1 pM.