

For Research Use Only

# PAR6B Recombinant monoclonal antibody, PBS Only

Catalog Number:86786-1-PBS



## Basic Information

Catalog Number:

86786-1-PBS

Source:

Rabbit

Isotype:

IgG

Immunogen Catalog Number:

AG5083

GenBank Accession Number:

BC060847

GeneID (NCBI):

84612

UNIPROT ID:

Q9BYG5

Full Name:

par-6 partitioning defective 6 homolog beta (C. elegans)

Calculated MW:

41 kDa

Observed MW:

52 kDa

Purification Method:

Protein A purification

CloneNo.:

251629D4

## Applications

Tested Applications:

WB, Indirect ELISA

Species Specificity:

human, mouse, rat

## Background Information

PAR6B (also named PAR6B) is a member of the PAR6 family. PAR6B is known to play a key role in mammary epithelial cell biology. Several studies have been reported which indicate deregulated PAR6B signaling contributes to malignant epithelial cell phenotypes due predominantly to disrupted polymerization and maintenance of tight junctions (PMID: 22957302). The approximately 4.8-kb long PAR6B mRNA was predominantly detected in both adult and fetal kidneys, while much weaker but significant signals were observed in the placenta, lung, and liver (PMID: 11260256). This antibody detects PAR6B with an apparent molecular weight of 50-53 kDa as has been demonstrated by several researches (PMID: 22496418; 25662318).

## Storage

Storage:

Store at -80°C.

**The product is shipped with ice packs. Upon receipt, store it immediately at -80°C**

Storage Buffer:

PBS only, pH7.3

For technical support and original validation data for this product please contact:

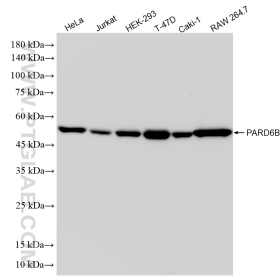
T: 4006900926

E: [Proteintech-CN@ptglab.com](mailto:Proteintech-CN@ptglab.com)

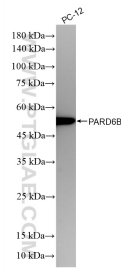
W: [ptgcn.com](http://ptgcn.com)

**This product is exclusively available under Proteintech Group brand and is not available to purchase from any other manufacturer.**

## Selected Validation Data



Various lysates were subjected to SDS PAGE followed by western blot with 86786-1-RR (PARD6B antibody) at dilution of 1:10000 incubated at room temperature for 1.5 hours. This data was developed using the same antibody clone with 86786-1-PBS in a different storage buffer formulation.



Various lysates were subjected to SDS PAGE followed by western blot with 86786-1-RR (PARD6B antibody) at dilution of 1:10000 incubated at room temperature for 1.5 hours. This data was developed using the same antibody clone with 86786-1-PBS in a different storage buffer formulation.