

For Research Use Only

# Zinc Alpha 2 Glycoprotein Recombinant monoclonal antibody, PBS Only (Detector)



Catalog Number: 86781-3-PBS

## Basic Information

<b>Catalog Number:</b> 86781-3-PBS	<b>GenBank Accession Number:</b> BC033830	<b>Purification Method:</b> Protein A purification
<b>Source:</b> Rabbit	<b>GeneID (NCBI):</b> 563	<b>CloneNo.:</b> 251605B9
<b>Isotype:</b> IgG	<b>UNIPROT ID:</b> P25311	
<b>Immunogen Catalog Number:</b> EG6736	<b>Full Name:</b> alpha-2-glycoprotein 1, zinc-binding	
	<b>Calculated MW:</b> 298 aa, 34 kDa	
	<b>Observed MW:</b> 41 kDa	

## Applications

**Tested Applications:**  
WB, IHC, Sandwich ELISA, Indirect ELISA

**Species Specificity:**  
human

## Background Information

Zinc-alpha-2-glycoprotein (AZGP1) is a 41-kDa soluble protein normally found in body fluids, functions as a lipid mobilizing factor (PMID: 19188554). It is known to be expressed in the secretory epithelia of the liver, lung, breast, GI tract and sweat glands, sharing significant structural similarity with the class I major histocompatibility complex (MHC) antigens (PMID: 3422450). AZGP1 is involved in carcinogenesis and differentiation. Altered expression of AZGP1 has been reported in breast cancer, prostate cancer and lung adenocarcinoma, hepatocellular carcinoma, pancreatic carcinoma and oral tumors (PMID: 22625427).

## Storage

**Storage:**  
Store at -80°C.  
**The product is shipped with ice packs. Upon receipt, store it immediately at -80°C**

**Storage Buffer:**  
PBS only, pH7.3

For technical support and original validation data for this product please contact:

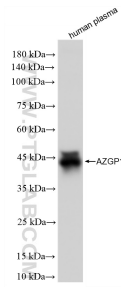
T: 4006900926

E: [Proteintech-CN@ptglab.com](mailto:Proteintech-CN@ptglab.com)

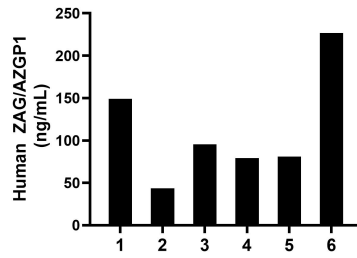
W: [ptgcn.com](http://ptgcn.com)

**This product is exclusively available under Proteintech Group brand and is not available to purchase from any other manufacturer.**

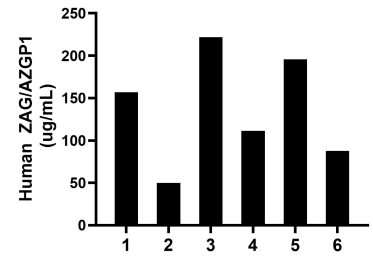
## Selected Validation Data



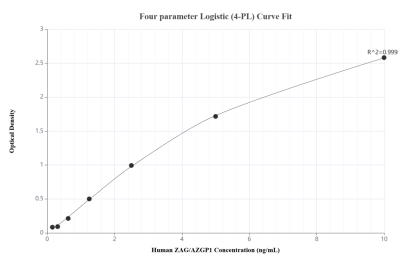
human plasma were subjected to SDS PAGE followed by western blot with 86781-3-RR (AZGP1 antibody) at dilution of 1:10000 incubated at room temperature for 1.5 hours. This data was developed using the same antibody clone with 86781-3-PBS in a different storage buffer formulation.



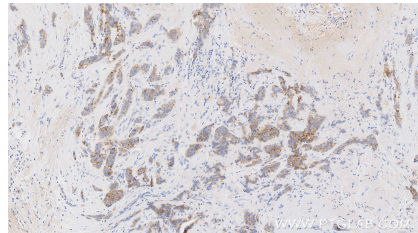
Urine of six individual healthy human donors was measured. The ZAG/AZGP1 concentration of detected samples was determined to be 112.47 ng/mL with a range of 43.71-226.60 ng/mL.



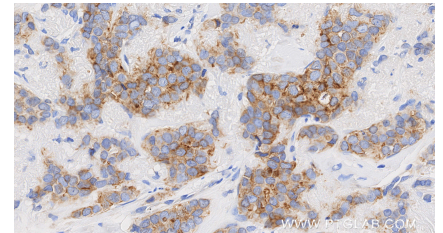
Plasma of six individual healthy human donors was measured. The ZAG/AZGP1 concentration of detected samples was determined to be 137.18 ug/mL with a range of 49.90-221.70 ug/mL.



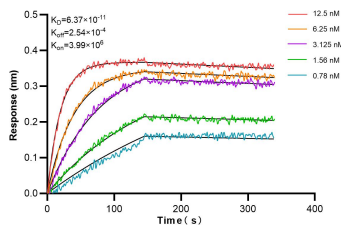
Sandwich ELISA standard curve of MP02669-2, Human ZAG/AZGP1 Recombinant Matched Antibody Pair - PBS only. 86781-2-PBS was coated to a plate as the capture antibody and incubated with serial dilutions of standard Eg6736. 86781-3-PBS was HRP conjugated as the detection antibody. Range: 0.156-10 ng/mL.



Immunohistochemical analysis of paraffin-embedded human breast cancer tissue slide using 86781-3-RR (Zinc Alpha 2 Glycoprotein antibody) at dilution of 1:500 (under 10x lens). Heat mediated antigen retrieval with Tris-EDTA buffer (pH 9.0). This data was developed using the same antibody clone with 86781-3-PBS in a different storage buffer formulation.



Immunohistochemical analysis of paraffin-embedded human breast cancer tissue slide using 86781-3-RR (Zinc Alpha 2 Glycoprotein antibody) at dilution of 1:500 (under 40x lens). Heat mediated antigen retrieval with Tris-EDTA buffer (pH 9.0). This data was developed using the same antibody clone with 86781-3-PBS in a different storage buffer formulation.



Biolayer interferometry (BLI) kinetic assays of 86781-3-RR against Human Zinc Alpha 2 Glycoprotein were performed. The affinity constant is 63.7 pM.