

For Research Use Only

CCL3 Recombinant monoclonal antibody, PBS Only (Detector)

Catalog Number:86780-4-PBS



Basic Information

Catalog Number:

86780-4-PBS

Source:

Rabbit

Isotype:

IgG

Immunogen Catalog Number:

EG3309

GenBank Accession Number:

BC071834

GeneID (NCBI):

6348

UNIPROT ID:

P10147

Full Name:

chemokine (C-C motif) ligand 3

Calculated MW:

92 aa, 10 kDa

Purification Method:

Protein A purification

CloneNo.:

251524F2

Applications

Tested Applications:

Sandwich ELISA, Indirect ELISA

Species Specificity:

human

Background Information

Storage

Storage:

Store at -80°C.

The product is shipped with ice packs. Upon receipt, store it immediately at -80°C

Storage Buffer:

PBS only, pH7.3

For technical support and original validation data for this product please contact:

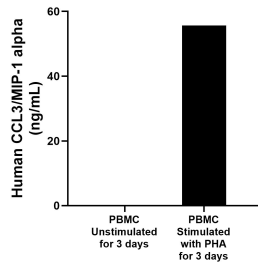
T: 4006900926

E: Proteintech-CN@ptglab.com

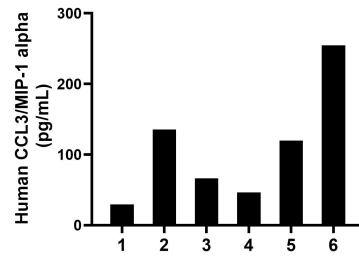
W: ptgcn.com

This product is exclusively available under Proteintech Group brand and is not available to purchase from any other manufacturer.

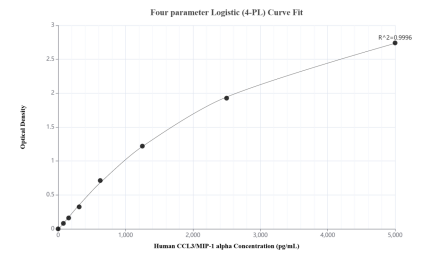
Selected Validation Data



Human peripheral blood mononuclear cells (PBMC) were cultured unstimulated or stimulated with 10 μ g/mL PHA for 3 days. The mean CCL3/MIP-1 alpha concentration was determined to be 0.1 ng/mL in unstimulated PBMC supernatant, 55.6 ng/mL in PHA stimulated PBMC supernatant.



Plasma of six individual healthy human donors was measured. The CCL3/MIP-1 alpha concentration of detected samples was determined to be 108.7 pg/mL with a range of 29.6-254.7 pg/mL.



Sandwich ELISA standard curve of MP02665-2, Human CCL3/MIP-1 alpha Recombinant Matched Antibody Pair - PBS only. 86780-1-PBS was coated to a plate as the capture antibody and incubated with serial dilutions of standard Eg3309. 86780-4-PBS was HRP conjugated as the detection antibody. Range: 78.1-5000 pg/mL.