

For Research Use Only

# CCL3 Recombinant monoclonal antibody, PBS Only (Capture/Detector)

Catalog Number: 86780-1-PBS



## Basic Information

<b>Catalog Number:</b> 86780-1-PBS	<b>GenBank Accession Number:</b> BC071834	<b>Purification Method:</b> Protein A purification
<b>Source:</b> Rabbit	<b>GeneID (NCBI):</b> 6348	<b>CloneNo.:</b> 251524A10
<b>Isotype:</b> IgG	<b>UNIPROT ID:</b> P10147	
<b>Immunogen Catalog Number:</b> EG3309	<b>Full Name:</b> chemokine (C-C motif) ligand 3	
	<b>Calculated MW:</b> 92 aa, 10 kDa	

## Applications

**Tested Applications:**  
Cytometric bead array, Sandwich ELISA, Indirect ELISA

**Species Specificity:**  
human

## Background Information

### Storage

**Storage:**  
Store at -80°C.  
**The product is shipped with ice packs. Upon receipt, store it immediately at -80°C**

**Storage Buffer:**  
PBS only, pH7.3

For technical support and original validation data for this product please contact:

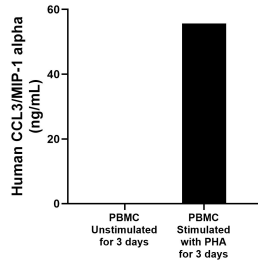
T: 4006900926

E: [Proteintech-CN@ptglab.com](mailto:Proteintech-CN@ptglab.com)

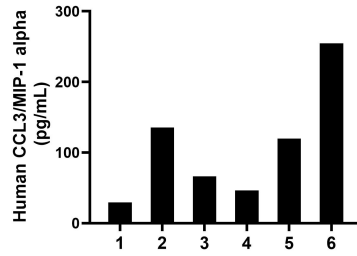
W: [ptgcn.com](http://ptgcn.com)

**This product is exclusively available under Proteintech Group brand and is not available to purchase from any other manufacturer.**

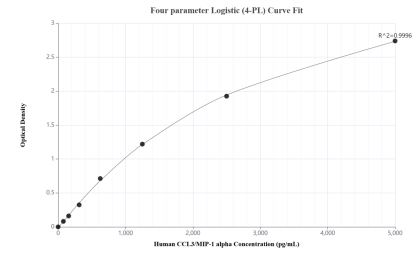
## Selected Validation Data



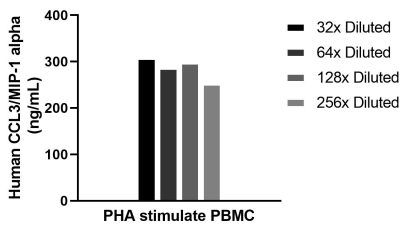
Human peripheral blood mononuclear cells (PBMC) were cultured unstimulated or stimulated with 10  $\mu$ g/mL PHA for 3 days. The mean CCL3/MIP-1 alpha concentration was determined to be 0.1 ng/mL in unstimulated PBMC supernatant, 55.6 ng/mL in PHA stimulated PBMC supernatant.



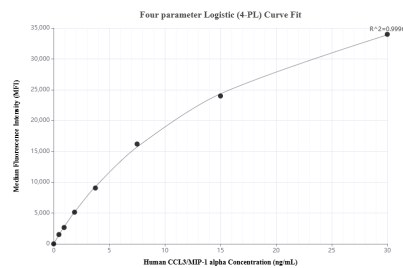
Plasma of six individual healthy human donors was measured. The CCL3/MIP-1 alpha concentration of detected samples was determined to be 108.7 pg/mL with a range of 29.6-254.7 pg/mL.



Sandwich ELISA standard curve of MP02665-2, Human CCL3/MIP-1 alpha Recombinant Matched Antibody Pair - PBS only. 86780-1-PBS was coated to a plate as the capture antibody and incubated with serial dilutions of standard Eg3309. 86780-4-PBS was HRP conjugated as the detection antibody. Range: 78.1-5000 pg/mL.



Human peripheral blood mononuclear cells ( $1 \times 10^6$  cells/mL) were cultured in RPMI supplemented with 8% fetal bovine serum, 50  $\mu$ M  $\beta$ -mercaptoethanol, 2 mM L-glutamine, 100 U/mL penicillin and 100  $\mu$ g/mL streptomycin sulfate. Cells were stimulated with 10  $\mu$ g/mL PHA. Aliquots of the cell culture supernatants were removed on days 5 assayed for levels of human CCL3/MIP-1 alpha, and measured 286.0 ng/mL.



Cytometric bead array standard curve of MP02665-1, CCL3/MIP-1 alpha Recombinant Matched Antibody Pair, PBS Only. Capture antibody: 86780-2-PBS. Detection antibody: 86780-1-PBS. Standard: Eg3309. Range: 0.469-60 ng/mL.