

For Research Use Only

HFE2/Hemojuvelin Recombinant monoclonal antibody

Catalog Number:86775-3-RR



Basic Information

Catalog Number:

86775-3-RR

Source:

Rabbit

Isotype:

IgG

Immunogen Catalog Number:

AG2354

GenBank Accession Number:

BC017926

GeneID (NCBI):

148738

UNIPROT ID:

Q6ZVN8

Full Name:

hemochromatosis type 2 (juvenile)

Calculated MW:

426 aa, 45 kDa

Observed MW:

45 kDa

Purification Method:

Protein A purification

CloneNo.:

251477G9

Recommended Dilutions:

WB: 1:1000-1:6000

IF/ICC: 1:50-1:500

Applications

Tested Applications:

WB, IF/ICC, ELISA

Species Specificity:

human, mouse

Positive Controls:

WB : HEK-293T cells, HeLa cells, HepG2 cells, human platelets, human skeletal muscle tissue, human heart tissue, mouse liver tissue

IF/ICC : HepG2 cells,

Background Information

HFE2, also known as Hemojuvelin (HJV), is a GPI-anchored protein that binds to new proteins and bone morphogenetic proteins (BMP2 and BMP4) and can be released from the cell membrane. HFE2 plays a key role in the regulation of hepcidin, which regulates the absorption and recycling of iron.(PMID: 17331953; PMID: 17938254)

Storage

Storage:

Store at -20°C. Stable for one year after shipment.

Storage Buffer:

PBS with 0.02% sodium azide and 50% glycerol, pH7.3

Aliquoting is unnecessary for -20°C storage

For technical support and original validation data for this product please contact:

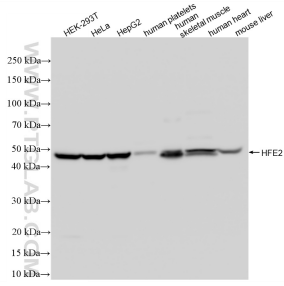
T: 4006900926

E: Proteintech-CN@ptglab.com

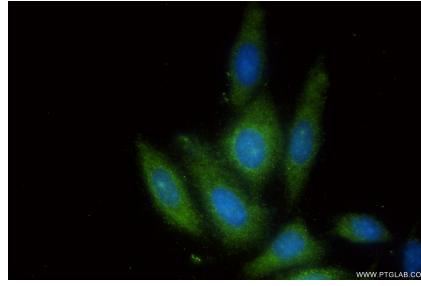
W: ptgcn.com

This product is exclusively available under Proteintech Group brand and is not available to purchase from any other manufacturer.

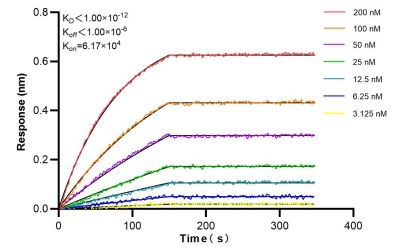
Selected Validation Data



Various lysates were subjected to SDS PAGE followed by western blot with 86775-3-RR (HFE2 antibody) at dilution of 1:3000 incubated at room temperature for 1.5 hours.



Immunofluorescent analysis of (-20°C Ethanol) fixed HepG2 cells using HFE2 antibody (86775-3-RR, Clone: 251477G9) at dilution of 1:200 and CoraLite® 488-Conjugated Goat Anti-Rabbit IgG(H+L) (SA00013-2).



Biolayer interferometry (BLI) kinetic assays of 86775-3-RR against Human HFE2 were performed. The affinity constant is below 1 pM.