

For Research Use Only

# MICB Recombinant monoclonal antibody, PBS Only (Capture)

Catalog Number:86774-3-PBS



## Basic Information

Catalog Number:

86774-3-PBS

Source:

Rabbit

Isotype:

IgG

Immunogen Catalog Number:

EG6138

GenBank Accession Number:

NM\_005931.4

GeneID (NCBI):

4277

UNIPROT ID:

Q29980

Full Name:

MHC class I polypeptide-related sequence B

Calculated MW:

43 kDa

Purification Method:

Protein A purification

CloneNo.:

251684B3

## Applications

Tested Applications:

Sandwich ELISA, Indirect ELISA

Species Specificity:

human

## Background Information

### Storage

Storage:

Store at -80°C.

**The product is shipped with ice packs. Upon receipt, store it immediately at -80°C**

Storage Buffer:

PBS only, pH7.3

For technical support and original validation data for this product please contact:

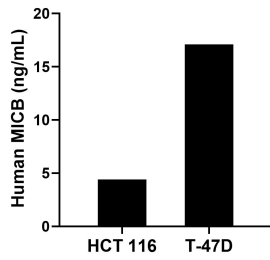
T: 4006900926

E: [Proteintech-CN@ptglab.com](mailto:Proteintech-CN@ptglab.com)

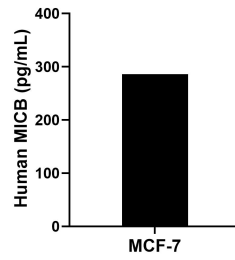
W: [ptgcn.com](http://ptgcn.com)

**This product is exclusively available under Proteintech Group brand and is not available to purchase from any other manufacturer.**

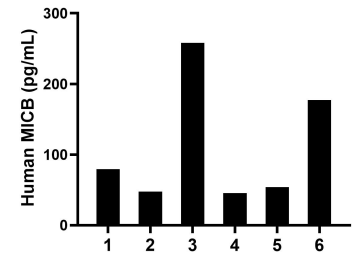
## Selected Validation Data



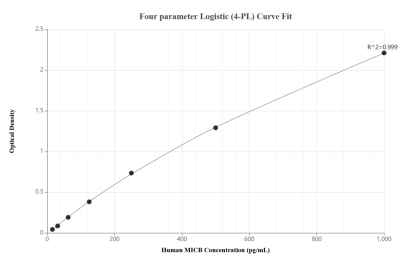
The mean MICB concentration was determined to be 4.4 ng/mL in HCT 116 cell extract based on a 1.3 mg/mL extract load and 17.1 ng/mL in T-47D cell extract based on a 1.2 mg/mL extract load.



MCF-7 were cultured in DMEM supplemented with 10% fetal bovine serum, 2.5 mM L-glutamine, 100 U/mL penicillin, and 100 µg/mL streptomycin sulfate. An aliquot of the cell culture supernate was removed, assayed for human MICB, and measured 285.8 pg/mL.



Serum of six individual healthy human donors was measured. The MICB concentration of detected samples was determined to be 110.3 pg/mL with a range of 45.5-258.0 pg/mL.



Sandwich ELISA standard curve of MP02835-1, Human MICB Recombinant Matched Antibody Pair - PBS only. 86774-3-PBS was coated to a plate as the capture antibody and incubated with serial dilutions of standard Eg6138. 86774-2-PBS was HRP conjugated as the detection antibody. Range: 15.6-1000 pg/mL.