

For Research Use Only

Rat PAI-1/Serpin E1 Recombinant monoclonal antibody, PBS Only (Detector)

Catalog Number: 86765-1-PBS



Basic Information

Catalog Number: 86765-1-PBS	GenBank Accession Number: NM_012620.1	Purification Method: Protein A purification
Concentration: 1 mg/ml	GeneID (NCBI): 24617	CloneNo.: 250718F11
Source: Rabbit	UNIPROT ID: P20961	
Isotype: IgG	Full Name: serine (or cysteine) peptidase inhibitor, clade E, member 1	
Immunogen Catalog Number: EG3256	Calculated MW: 45 kDa	

Applications

Tested Applications:
Sandwich ELISA, Indirect ELISA

Species Specificity:
rat

Background Information

Storage

Storage:
Store at -80°C.
The product is shipped with ice packs. Upon receipt, store it immediately at -80°C

Storage Buffer:
PBS only, pH7.3

For technical support and original validation data for this product please contact:

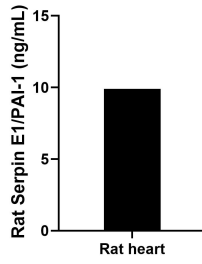
T: 4006900926

E: Proteintech-CN@ptglab.com

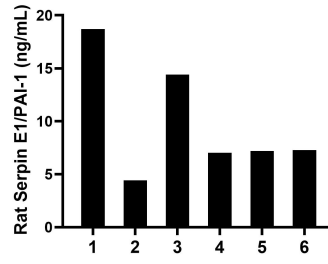
W: ptgcn.com

This product is exclusively available under Proteintech Group brand and is not available to purchase from any other manufacturer.

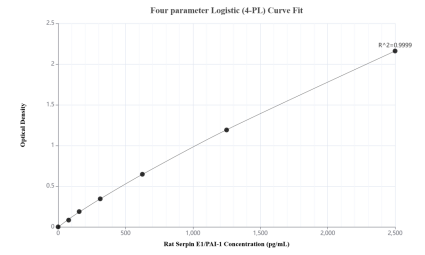
Selected Validation Data



The mean Serpin E1/PAI-1 concentration was determined to be 9.90 ng/mL in rat heart extract based on a 6.70 mg/mL extract load.



Serum of six rats was measured. The Serpin E1/PAI-1 concentration of detected samples was determined to be 9.84 ng/mL with a range of 4.42-18.71 ng/mL.



Sandwich ELISA standard curve of MP02642-1, Rat Serpin E1/PAI-1 Recombinant Matched Antibody Pair - PBS only. 86765-2-PBS was coated to a plate as the capture antibody and incubated with serial dilutions of standard Eg3256. 86765-1-PBS was HRP conjugated as the detection antibody. Range: 78.1-2500 pg/mL.