

For Research Use Only

# SLC43A2 Recombinant monoclonal antibody, PBS Only (Capture)

Catalog Number: 86764-2-PBS



## Basic Information

<b>Catalog Number:</b> 86764-2-PBS	<b>GenBank Accession Number:</b> BC027923	<b>Purification Method:</b> Protein A purification
<b>Source:</b> Rabbit	<b>GeneID (NCBI):</b> 124935	<b>CloneNo.:</b> 251699F7
<b>Isotype:</b> IgG	<b>UNIPROT ID:</b> Q8N370	
<b>Immunogen Catalog Number:</b> AG31341	<b>Full Name:</b> solute carrier family 43, member 2	
	<b>Calculated MW:</b> 63 kDa	

## Applications

**Tested Applications:**  
Cytometric bead array, Indirect ELISA

**Species Specificity:**  
human

## Background Information

### Storage

**Storage:**  
Store at -80°C.  
**The product is shipped with ice packs. Upon receipt, store it immediately at -80°C**

**Storage Buffer:**  
PBS only, pH7.3

For technical support and original validation data for this product please contact:

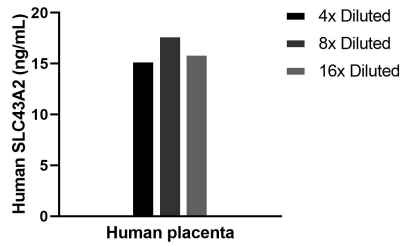
T: 4006900926

E: [Proteintech-CN@ptglab.com](mailto:Proteintech-CN@ptglab.com)

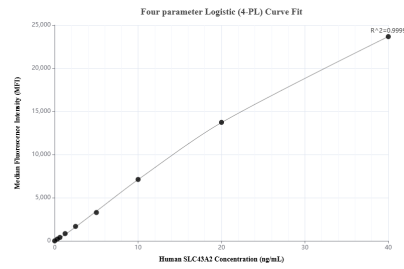
W: [ptgcn.com](http://ptgcn.com)

**This product is exclusively available under Proteintech Group brand and is not available to purchase from any other manufacturer.**

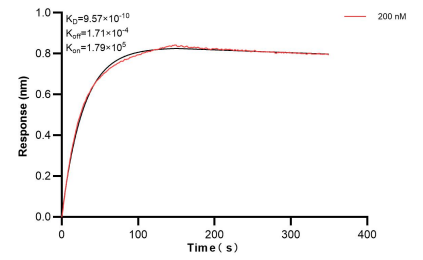
## Selected Validation Data



The mean SLC43A2 concentration was determined to be 16.4 ng/mL in Human placenta tissue extract based on a 3.2 mg/mL extract load.



Cytometric bead array standard curve of MP02656-1, SLC43A2 Recombinant Matched Antibody Pair, PBS Only. Capture antibody: 86764-2-PBS. Detection antibody: 86764-1-PBS. Standard: Ag31341. Range: 0.312-40 ng/mL.



Bi-layer interferometry (BLI) kinetic assay of 86764-2-PBS against Human SLC43A2 was performed. The affinity constant is 0.957 nM.