

For Research Use Only

SLC43A2 Recombinant monoclonal antibody, PBS Only (Detector)

Catalog Number: 86764-1-PBS



Basic Information

Catalog Number: 86764-1-PBS	GenBank Accession Number: BC027923	Purification Method: Protein A purification
Source: Rabbit	GeneID (NCBI): 124935	CloneNo.: 251699C4
Isotype: IgG	UNIPROT ID: Q8N370	
Immunogen Catalog Number: AG31341	Full Name: solute carrier family 43, member 2	
	Calculated MW: 63 kDa	

Applications

Tested Applications:
Cytometric bead array, Indirect ELISA

Species Specificity:
human

Background Information

Storage

Storage:
Store at -80°C.
The product is shipped with ice packs. Upon receipt, store it immediately at -80°C

Storage Buffer:
PBS only, pH7.3

For technical support and original validation data for this product please contact:

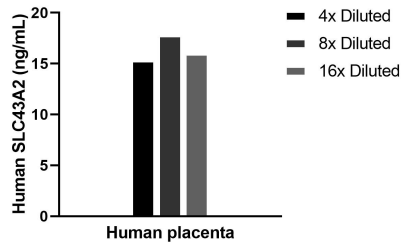
T: 4006900926

E: Proteintech-CN@ptglab.com

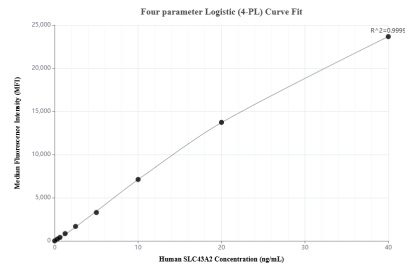
W: ptgcn.com

This product is exclusively available under Proteintech Group brand and is not available to purchase from any other manufacturer.

Selected Validation Data



The mean SLC43A2 concentration was determined to be 16.4 ng/mL in Human placenta tissue extract based on a 3.2 mg/mL extract load.



Cytometric bead array standard curve of MP02656-1, SLC43A2 Recombinant Matched Antibody Pair, PBS Only. Capture antibody: 86764-2-PBS. Detection antibody: 86764-1-PBS. Standard: Ag31341. Range: 0.312-40 ng/mL.