

For Research Use Only

KRT15 Recombinant antibody, PBS Only (Detector)

Catalog Number: 86761-1-PBS



Basic Information

Catalog Number:

86761-1-PBS

Concentration:

1 mg/ml

Source:

Rabbit

Isotype:

IgG

GenBank Accession Number:

BC002641

GeneID (NCBI):

3866

UNIPROT ID:

P19012

Full Name:

keratin 15

Calculated MW:

49 kDa

Purification Method:

Protein A purification

CloneNo.:

251445F2

Applications

Tested Applications:

Cytometric bead array, Indirect ELISA, Sample test

Species Specificity:

human

Background Information

Storage

Storage:

Store at -80°C.

The product is shipped with ice packs. Upon receipt, store it immediately at -80°C

Storage Buffer:

PBS only, pH7.3

For technical support and original validation data for this product please contact:

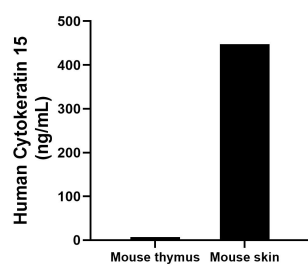
T: 4006900926

E: Proteintech-CN@ptglab.com

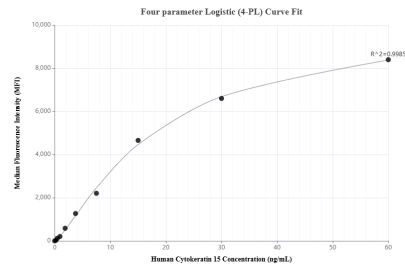
W: ptgcn.com

This product is exclusively available under Proteintech Group brand and is not available to purchase from any other manufacturer.

Selected Validation Data



The mean Cytokeratin 15 concentration was determined to be 6.9 ng/mL in mouse thymus tissue extract based on a 5.8 mg/mL extract load, 447.5 ng/mL in mouse skin tissue extract based on a 0.9 mg/mL extract load.



Cytometric bead array standard curve of MP02654-1, Cytokeratin 15 Recombinant Matched Antibody Pair, PBS Only. Capture antibody: 86761-2-PBS. Detection antibody: 86761-1-PBS. Standard: SY02551. Range: 0.234-60 ng/mL.