

For Research Use Only

Serpin A4/Kallistatin Recombinant monoclonal antibody, PBS Only (Detector)

Catalog Number: 86758-1-PBS



Basic Information

Catalog Number: 86758-1-PBS	GenBank Accession Number: NM_001289033.1	Purification Method: Protein A purification
Source: Rabbit	GeneID (NCBI): 5267	CloneNo.: 251716B4
Isotype: IgG	UNIPROT ID: P29622	
Immunogen Catalog Number: EG4707	Full Name: serpin peptidase inhibitor, clade A (alpha-1 antiproteinase, antitrypsin), member 4	
	Calculated MW: 49 kDa	

Applications

Tested Applications:
Cytometric bead array, Sandwich ELISA, Indirect ELISA

Species Specificity:
human

Background Information

Storage

Storage:
Store at -80°C.
The product is shipped with ice packs. Upon receipt, store it immediately at -80°C

Storage Buffer:
PBS only, pH7.3

For technical support and original validation data for this product please contact:

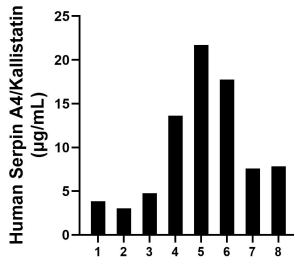
T: 4006900926

E: Proteintech-CN@ptglab.com

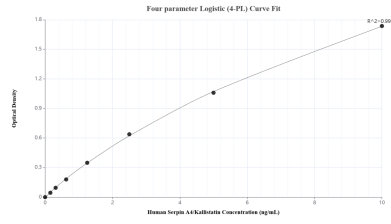
W: ptgcn.com

This product is exclusively available under Proteintech Group brand and is not available to purchase from any other manufacturer.

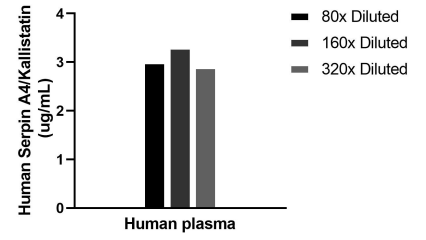
Selected Validation Data



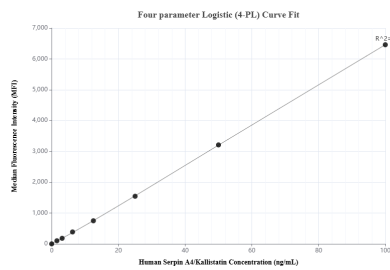
Plasma of eight individual healthy human donors was measured. The Serpin A4/Kallistatin concentration of detected samples was determined to be 10.78 µg/mL with a range of 3.02-21.69 µg/mL.



Sandwich ELISA standard curve of MP02653-1, Human Serpin A4/Kallistatin Recombinant Matched Antibody Pair - PBS only. 86758-2-PBS was coated to a plate as the capture antibody and incubated with serial dilutions of standard Eg4707. 86758-1-PBS was HRP conjugated as the detection antibody. Range: 0.156-10 ng/mL.



The mean Serpin A4/Kallistatin concentration was determined to be 3.0 µg/mL in human plasma.



Cytometric bead array standard curve of MP02653-1, Serpin A4/Kallistatin Recombinant Matched Antibody Pair, PBS Only. Capture antibody: 86758-2-PBS. Detection antibody: 86758-1-PBS. Standard: Eg4707. Range: 1.562-100 ng/mL.