

For Research Use Only

# ALPP Recombinant antibody, PBS Only (Capture)

Catalog Number: 86752-2-PBS



## Basic Information

<b>Catalog Number:</b> 86752-2-PBS	<b>GenBank Accession Number:</b> NM_001632.4	<b>Purification Method:</b> Protein A purification
<b>Concentration:</b> 1 mg/ml	<b>GeneID (NCBI):</b> 250	<b>CloneNo.:</b> 251261C4
<b>Source:</b> Rabbit	<b>UNIPROT ID:</b> P05187	
<b>Isotype:</b> IgG	<b>Full Name:</b> alkaline phosphatase, placental (Regan isozyme)	
<b>Immunogen Catalog Number:</b> EG3065	<b>Calculated MW:</b> 58 kDa	

## Applications

**Tested Applications:**  
Sandwich ELISA, Indirect ELISA, Sample test

**Species Specificity:**  
human

## Background Information

### Storage

**Storage:**  
Store at -80°C.  
**The product is shipped with ice packs. Upon receipt, store it immediately at -80°C**

**Storage Buffer:**  
PBS only, pH7.3

For technical support and original validation data for this product please contact:

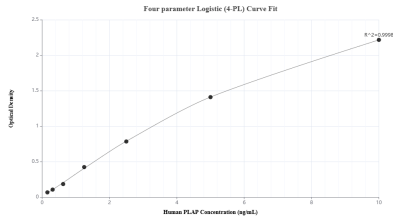
T: 4006900926

E: [Proteintech-CN@ptglab.com](mailto:Proteintech-CN@ptglab.com)

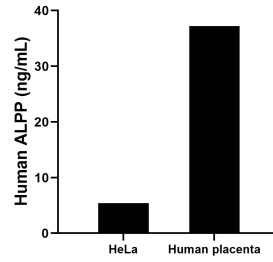
W: [ptgcn.com](http://ptgcn.com)

**This product is exclusively available under Proteintech Group brand and is not available to purchase from any other manufacturer.**

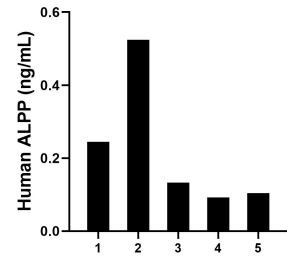
## Selected Validation Data



Sandwich ELISA standard curve of MP02613-1, Human PLAP Recombinant Matched Antibody Pair - PBS only. 86752-2-PBS was coated to a plate as the capture antibody and incubated with serial dilutions of standard Eg3065. 86752-1-PBS was HRP conjugated as the detection antibody. Range: 0.156-10 ng/mL



The mean PLAP concentration was determined to be 5.44 ng/mL in HeLa cell extract based on a 1.2 mg/mL extract load and 37.23 ng/mL in human placenta tissue extract based on a 3.8 mg/mL extract load.



Plasma of five individual healthy human donors was measured. The human PLAP concentration of detected samples was determined to be 0.22 ng/mL with a range of 0.09 - 0.52 ng/mL.