

For Research Use Only

ALPP Recombinant antibody, PBS Only (Detector)

Catalog Number:86752-1-PBS



Basic Information

Catalog Number: 86752-1-PBS	GenBank Accession Number: NM_001632.4	Purification Method: Protein A purification
Concentration: 1 mg/ml	GeneID (NCBI): 250	CloneNo.: 251261A2
Source: Rabbit	UNIPROT ID: P05187	
Isotype: IgG	Full Name: alkaline phosphatase, placental (Regan isozyme)	
Immunogen Catalog Number: EG3065	Calculated MW: 58 kDa	

Applications

Tested Applications:
Sandwich ELISA, Indirect ELISA, Sample test

Species Specificity:
human

Background Information

Storage

Storage:
Store at -80°C.
The product is shipped with ice packs. Upon receipt, store it immediately at -80°C

Storage Buffer:
PBS only, pH7.3

For technical support and original validation data for this product please contact:

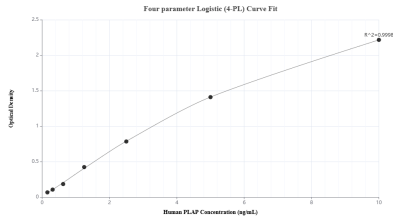
T: 4006900926

E: Proteintech-CN@ptglab.com

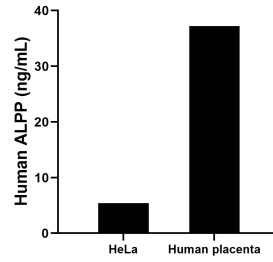
W: ptgcn.com

This product is exclusively available under Proteintech Group brand and is not available to purchase from any other manufacturer.

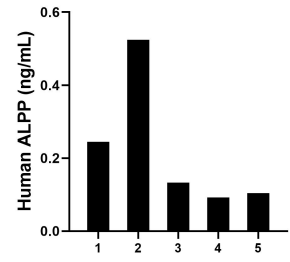
Selected Validation Data



Sandwich ELISA standard curve of MP02613-1, Human PLAP Recombinant Matched Antibody Pair - PBS only. 86752-2-PBS was coated to a plate as the capture antibody and incubated with serial dilutions of standard Eg3065. 86752-1-PBS was HRP conjugated as the detection antibody. Range: 0.156-10 ng/mL



The mean PLAP concentration was determined to be 5.44 ng/mL in HeLa cell extract based on a 1.2 mg/mL extract load and 37.23 ng/mL in human placenta tissue extract based on a 3.8 mg/mL extract load.



Plasma of five individual healthy human donors was measured. The human PLAP concentration of detected samples was determined to be 0.22 ng/mL with a range of 0.09 - 0.52 ng/mL.