

For Research Use Only

CCL13 Recombinant antibody, PBS Only (Detector)

Catalog Number: 86751-1-PBS



Basic Information

Catalog Number: 86751-1-PBS	GenBank Accession Number: NM_005408.3	Purification Method: Protein A purification
Concentration: 1 mg/ml	GeneID (NCBI): 6357	CloneNo.: 250378D6
Source: Rabbit	UNIPROT ID: Q99616	
Isotype: IgG	Full Name: chemokine (C-C motif) ligand 13	
Immunogen Catalog Number: EG2818	Calculated MW: 11 kDa	

Applications

Tested Applications:
Sandwich ELISA, Indirect ELISA, Sample test

Species Specificity:
human

Background Information

Storage

Storage:
Store at -80°C.
The product is shipped with ice packs. Upon receipt, store it immediately at -80°C

Storage Buffer:
PBS only, pH7.3

For technical support and original validation data for this product please contact:

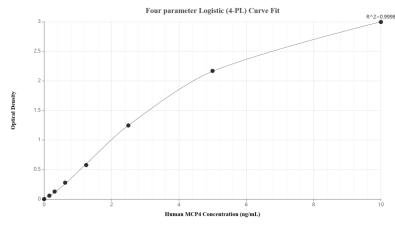
T: 4006900926

E: Proteintech-CN@ptglab.com

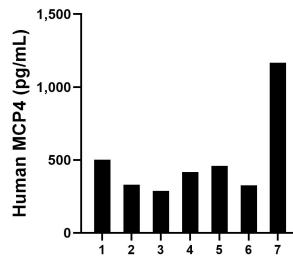
W: ptgcn.com

This product is exclusively available under Proteintech Group brand and is not available to purchase from any other manufacturer.

Selected Validation Data



Sandwich ELISA standard curve of MP02606-1, Human MCP4 Recombinant Matched Antibody Pair - PBS only. 86751-2-PBS was coated to a plate as the capture antibody and incubated with serial dilutions of standard Eg2818. 86751-1-PBS was HRP conjugated as the detection antibody. Range: 0.156-10 ng/mL.



Plasma of seven individual healthy human donors was measured. The MCP4 concentration of detected samples was determined to be 498.83 pg/mL with a range of 288.98-1,167.06 pg/mL.