

For Research Use Only

Podoplanin Recombinant monoclonal antibody, PBS Only

Catalog Number:86750-2-PBS



Basic Information

Catalog Number: 86750-2-PBS	GenBank Accession Number: BC014668	Purification Method: Protein A purification
Source: Rabbit	GeneID (NCBI): 10630	CloneNo.: 251406B11
Isotype: IgG	UNIPROT ID: Q86YL7-1	
Immunogen Catalog Number: EG5024	Full Name: podoplanin	
	Observed MW: 36-43 kDa	

Applications

Tested Applications:
WB, IHC, Indirect ELISA

Species Specificity:
human

Background Information

Podoplanin was identified as a 43 kDa glycoprotein found in the cell membranes of glomerular epithelial cells (podocyte) (PMID: 9327748). It is a lymphatic marker because the expression of podoplanin has been detected in lymphatic but not blood vascular endothelium, and is useful as the marker of tumor-associated Lymphangiogenesis. Podoplanin has a function in developing testis, most likely at the level of cell-cell interactions among pre-meiotic germ cells and immature Sertoli cells. It may be involved in cell migration and/or actin cytoskeleton organization. When expressed in keratinocytes, PDPN induces changes in cell morphology with transfected cells showing an elongated shape, numerous membrane protrusions, major reorganization of the actin cytoskeleton, increased motility and decreased cell adhesion. It is required for normal lung cell proliferation and alveolus formation at birth. PDPN induces platelet aggregation. It does not have any effect on folic acid or amino acid transport and does not function as a water channel or as a regulator of aquaporin-type water channels.

Storage

Storage:
Store at -80°C.
The product is shipped with ice packs. Upon receipt, store it immediately at -80°C

Storage Buffer:
PBS only, pH7.3

For technical support and original validation data for this product please contact:

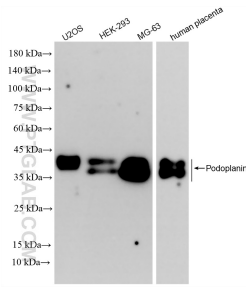
T: 4006900926

E: Proteintech-CN@ptglab.com

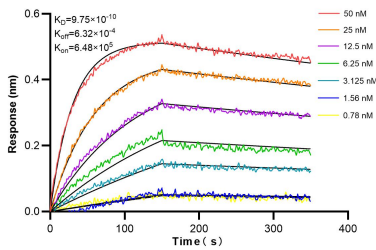
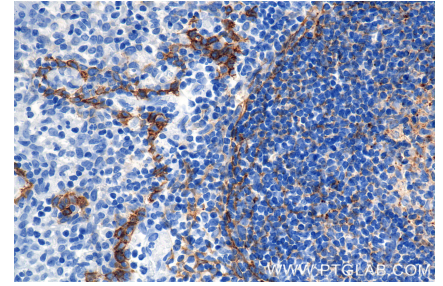
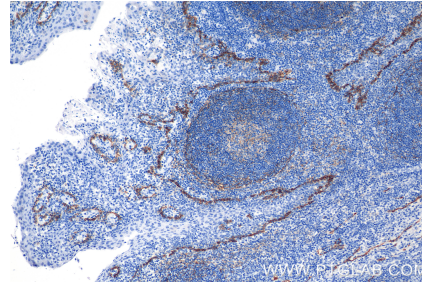
W: ptgcn.com

This product is exclusively available under Proteintech Group brand and is not available to purchase from any other manufacturer.

Selected Validation Data



Various lysates were subjected to SDS PAGE followed by western blot with 86750-2-RR (PDPN antibody) at dilution of 1:5000 incubated at room temperature for 1.5 hours. This data was developed using the same antibody clone with 86750-2-PBS in a different storage buffer formulation.



Biolayer interferometry (BLI) kinetic assays of 86750-2-RR against Human Podoplanin were performed. The affinity constant is 0.975 nM.