

For Research Use Only

# Phospho-TAU (Ser202) Recombinant monoclonal antibody

Catalog Number: 86748-1-RR



## Basic Information

<b>Catalog Number:</b> 86748-1-RR	<b>GenBank Accession Number:</b> BC000558	<b>Purification Method:</b> Protein A purification
<b>Source:</b> Rabbit	<b>GeneID (NCBI):</b> 4137	<b>CloneNo.:</b> 251172C7
<b>Isotype:</b> IgG	<b>UNIPROT ID:</b> P10636	<b>Recommended Dilutions:</b> WB: 1:2000-1:10000 IF-P: 1:250-1:1000
	<b>Full Name:</b> microtubule-associated protein tau	
	<b>Calculated MW:</b> 37-46, 79-81 kDa	
	<b>Observed MW:</b> 45-60 kDa	

## Applications

<b>Tested Applications:</b> WB, IF-P, ELISA	<b>Positive Controls:</b>
<b>Species Specificity:</b> human, mouse	<b>WB :</b> FAD3T mouse brain tissue, mouse brain tissue, $\lambda$ phosphatase treated mouse brain tissue
	<b>IF-P :</b> mouse brain tissue,

## Background Information

Tau is hyperphosphorylated during aging and in age-related neurodegenerative diseases such as Alzheimer's disease (AD) and fronto-temporal dementia. Hyperphosphorylation of Tau leads to the formation of neurofibrillary tangles (NFT) in the neurons and glia cells, which is one of the hallmarks of AD.

## Storage

**Storage:**  
Store at -20°C. Stable for one year after shipment.  
**Storage Buffer:**  
PBS with 0.02% sodium azide and 50% glycerol, pH7.3  
Aliquoting is unnecessary for -20°C storage

For technical support and original validation data for this product please contact:

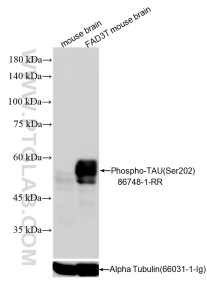
T: 4006900926

E: [Proteintech-CN@ptglab.com](mailto:Proteintech-CN@ptglab.com)

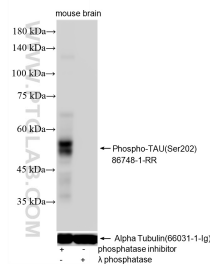
W: [ptgcn.com](http://ptgcn.com)

This product is exclusively available under Proteintech Group brand and is not available to purchase from any other manufacturer.

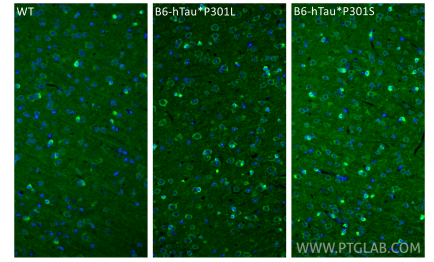
## Selected Validation Data



Various lysates were subjected to SDS PAGE followed by western blot with 86748-1-RR (Phospho-TAU (Ser202) antibody) at dilution of 1:5000 incubated at room temperature for 1.5 hours. The membrane was stripped and re-blotted with Alpha Tubulin antibody as loading control. The FAD3T mouse is a triple transgenic model expressing APP, PS1, and Tau transgenes.



Phosphatase inhibitor treated and  $\lambda$  phosphatase treated mouse brain tissue were subjected to SDS PAGE followed by western blot with 86748-1-RR (Phospho-TAU (Ser202) antibody) at dilution of 1:5000 incubated at room temperature for 1 hours. The membrane was stripped and re-blotted with Alpha Tubulin antibody as loading control.



Immunofluorescent analysis of (4% PFA) fixed paraffin-embedded mouse brain tissue using Phospho-TAU (Ser202) antibody (86748-1-RR, Clone: 251172C7) at dilution of 1:500 and CoraLite®488-Conjugated Goat Anti-Rabbit IgG(H+L) (SA00013-2). Heat mediated antigen retrieval with Tris-EDTA buffer (pH 9.0).