

For Research Use Only

Phospho-TAU (Ser202) Recombinant monoclonal antibody, PBS Only

Catalog Number: 86748-1-PBS



Basic Information

Catalog Number:

86748-1-PBS

Source:

Rabbit

Isotype:

IgG

GenBank Accession Number:

BC000558

GeneID (NCBI):

4137

UNIPROT ID:

P10636

Full Name:

microtubule-associated protein tau

Calculated MW:

37-46, 79-81 kDa

Observed MW:

45-60 kDa

Purification Method:

Protein A purification

CloneNo.:

251172C7

Applications

Tested Applications:

WB, IF-P, Indirect ELISA

Species Specificity:

human, mouse

Background Information

Tau is hyperphosphorylated during aging and in age-related neurodegenerative diseases such as Alzheimer's disease (AD) and fronto-temporal dementia. Hyperphosphorylation of Tau leads to the formation of neurofibrillary tangles (NFT) in the neurons and glia cells, which is one of the hallmarks of AD.

Storage

Storage:

Store at -80°C.

The product is shipped with ice packs. Upon receipt, store it immediately at -80°C

Storage Buffer:

PBS only, pH7.3

For technical support and original validation data for this product please contact:

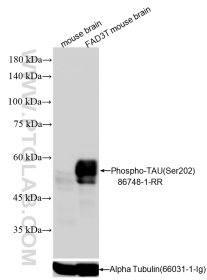
T: 4006900926

E: Proteintech-CN@ptglab.com

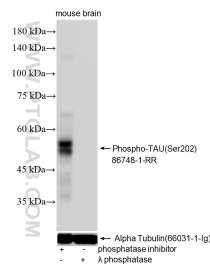
W: ptgcn.com

This product is exclusively available under Proteintech Group brand and is not available to purchase from any other manufacturer.

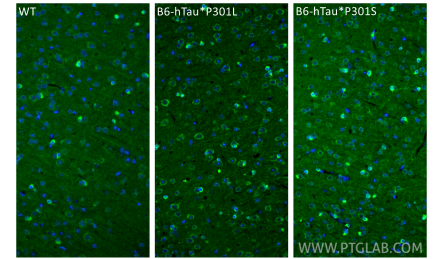
Selected Validation Data



Various lysates were subjected to SDS PAGE followed by western blot with 86748-1-RR (Phospho-TAU (Ser202) antibody) at dilution of 1:5000 incubated at room temperature for 1.5 hours. The membrane was stripped and re-blotted with Alpha Tubulin antibody as loading control. The FAD3T mouse is a triple transgenic model expressing APP, PS1, and Tau transgenes. This data was developed using the same antibody clone with 86748-1-PBS in a different storage buffer formulation.



Phosphatase inhibitor treated and λ phosphatase treated mouse brain tissue were subjected to SDS PAGE followed by western blot with 86748-1-RR (Phospho-TAU (Ser202) antibody) at dilution of 1:5000 incubated at room temperature for 1 hour. The membrane was stripped and re-blotted with Alpha Tubulin antibody as loading control. This data was developed using the same antibody clone with 86748-1-PBS in a different storage buffer formulation.



Immunofluorescent analysis of (4% PFA) fixed paraffin-embedded mouse brain tissue using Phospho-TAU (Ser202) antibody (86748-1-RR, Clone: 251172C7) at dilution of 1:500 and CoraLite®488-Conjugated Goat Anti-Rabbit IgG(H+L) (SA00013-2). Heat mediated antigen retrieval with Tris-EDTA buffer (pH 9.0). This data was developed using the same antibody clone with 86748-1-PBS in a different storage buffer formulation.