

For Research Use Only

# GUF1 Recombinant monoclonal antibody

Catalog Number: 86747-1-RR



## Basic Information

**Catalog Number:**

86747-1-RR

**Source:**

Rabbit

**Isotype:**

IgG

**Immunogen Catalog Number:**

AG11579

**GenBank Accession Number:**

BC036768

**GeneID (NCBI):**

60558

**UNIPROT ID:**

Q8N442

**Full Name:**

GUF1 GTPase homolog (*S. cerevisiae*)

**Calculated MW:**

669 aa, 74 kDa

**Observed MW:**

68-70 kDa

**Purification Method:**

Protein A purification

**CloneNo.:**

251449D6

**Recommended Dilutions:**

WB: 1:5000-1:50000

IP: 0.5-4.0 ug for 1.0-3.0 mg of total protein lysate

## Applications

**Tested Applications:**

WB, IP, ELISA

**Species Specificity:**

human, mouse, rat

**Positive Controls:**

WB : HepG2 cells, LNCaP cells, mouse liver tissue, rat liver tissue, mouse brain tissue, mouse pancreas tissue

IP : HepG2 cells,

## Background Information

GUF1 (GUF1 GTPase), also known as EF-4 (elongation factor 4 homolog), is a 669 amino acid protein belonging to the GTP-binding elongation factor family and the LepA subfamily. Localizing to the mitochondrion inner membrane, GUF1 promotes mitochondrial protein synthesis and binds to mitochondrial ribosomes in a GTP-dependent manner. GUF1 may act as a fidelity factor of the translation reaction, by catalyzing a one-codon backward translocation of tRNAs on improperly translocated ribosomes.

## Storage

**Storage:**

Store at -20°C. Stable for one year after shipment.

**Storage Buffer:**

PBS with 0.02% sodium azide and 50% glycerol, pH7.3

Aliquoting is unnecessary for -20°C storage

For technical support and original validation data for this product please contact:

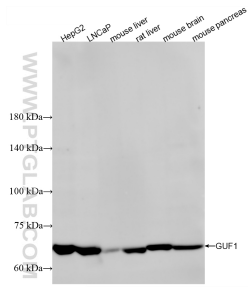
T: 4006900926

E: [Proteintech-CN@ptglab.com](mailto:Proteintech-CN@ptglab.com)

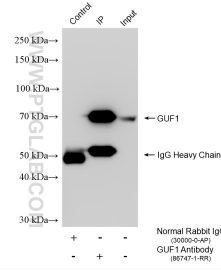
W: [ptgcn.com](http://ptgcn.com)

**This product is exclusively available under Proteintech Group brand and is not available to purchase from any other manufacturer.**

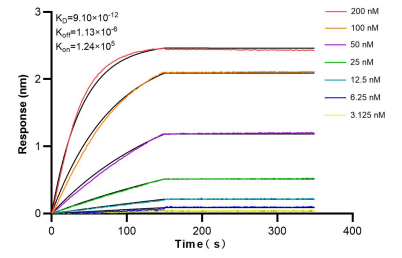
## Selected Validation Data



Various lysates were subjected to SDS PAGE followed by western blot with 86747-1-RR (GUF1 antibody) at dilution of 1:10000 incubated at room temperature for 1.5 hours.



IP result of anti-GUF1 (IP:86747-1-RR, 4 $\mu$ g; Detection:86747-1-RR 1:2000) with HepG2 cells lysate 2000  $\mu$ g.



Biacore BLI kinetic assays of 86747-1-RR against Human GUF1 were performed. The affinity constant is 9.10 pM.