

For Research Use Only

CCDC99 Recombinant monoclonal antibody, PBS Only (Detector)

Catalog Number: 86746-2-PBS



Basic Information

Catalog Number: 86746-2-PBS	GenBank Accession Number: BC012568	Purification Method: Protein A purification
Source: Rabbit	GeneID (NCBI): 54908	CloneNo.: 251474A9
Isotype: IgG	UNIPROT ID: Q96EA4	
Immunogen Catalog Number: AG20430	Full Name: coiled-coil domain containing 99	
	Calculated MW: 605 aa, 70 kDa	

Applications

Tested Applications:
Cytometric bead array, Indirect ELISA

Species Specificity:
human

Background Information

Storage

Storage:
Store at -80°C.
The product is shipped with ice packs. Upon receipt, store it immediately at -80°C

Storage Buffer:
PBS only, pH7.3

For technical support and original validation data for this product please contact:

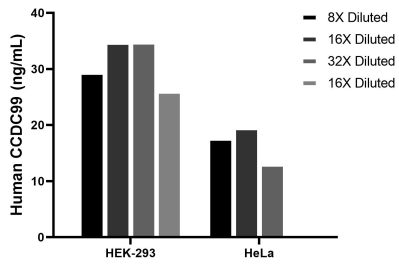
T: 4006900926

E: Proteintech-CN@ptglab.com

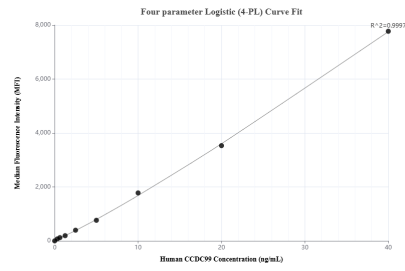
W: ptgcn.com

This product is exclusively available under Proteintech Group brand and is not available to purchase from any other manufacturer.

Selected Validation Data



The mean CCDC99 concentration was determined to be 31.2 ng/mL in HEK-293 cell extract based on a 1.2 mg/mL extract load, 18.6 ng/mL in HeLa cell extract based on a 1.2 mg/mL extract load.



Cytometric bead array standard curve of MP02617-1, CCDC99 Recombinant Matched Antibody Pair, PBS Only. Capture antibody: 86746-3-PBS. Detection antibody: 86746-2-PBS. Standard: Ag20430. Range: 0.312-40 ng/mL.