

For Research Use Only



Angiotensinogen/AGT Recombinant monoclonal antibody, PBS Only (Capture)

Catalog Number: 86729-1-PBS

Basic Information

Catalog Number: 86729-1-PBS	GenBank Accession Number: NM_000029.4	Purification Method: Protein A purification
Source: Rabbit	GeneID (NCBI): 183	CloneNo.: 251419A5
Isotype: IgG	UNIPROT ID: P01019	
Immunogen Catalog Number: EG3099	Full Name: angiotensinogen (serpin peptidase inhibitor, clade A, member 8)	
	Calculated MW: 52 kDa	
	Observed MW: 53 kDa	

Applications

Tested Applications:
WB, Sandwich ELISA, Indirect ELISA

Species Specificity:
human

Background Information

Angiotensinogen is a precursor of angiotensin II (Ang II), is expressed and synthesized largely in the liver and is cleaved by the enzyme renin in response to lowered blood pressure. It has a key role in mediating vascular constriction and regulating salt and fluid homeostasis. The resulting product, angiotensin I, is then cleaved by angiotensin converting enzyme (ACE) to generate the physiologically active enzyme angiotensin II. Mutations in this gene are associated with susceptibility to essential hypertension, and can cause renal tubular dysgenesis, a severe disorder of renal tubular development. Defects in this gene also have been associated with non-familial structural atrial fibrillation, and inflammatory bowel disease.

Storage

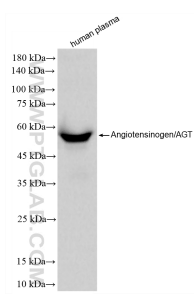
Storage:
Store at -80°C.
The product is shipped with ice packs. Upon receipt, store it immediately at -80°C

Storage Buffer:
PBS only, pH7.3

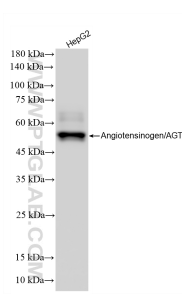
For technical support and original validation data for this product please contact:
T: 4006900926 E: Proteintech-CN@ptglab.com W: ptgcn.com

This product is exclusively available under Proteintech Group brand and is not available to purchase from any other manufacturer.

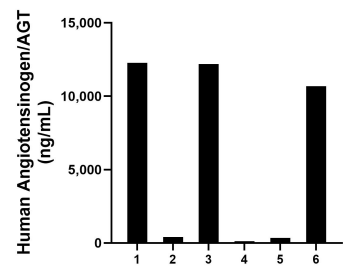
Selected Validation Data



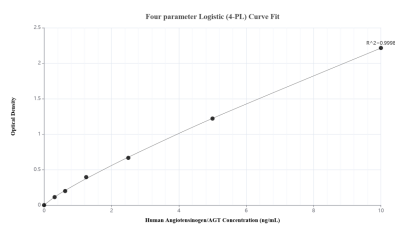
human plasma were subjected to SDS PAGE followed by western blot with 86729-1-RR (Angiotensinogen/AGT antibody) at dilution of 1:10000 incubated at room temperature for 1.5 hours. This data was developed using the same antibody clone with 86729-1-PBS in a different storage buffer formulation.



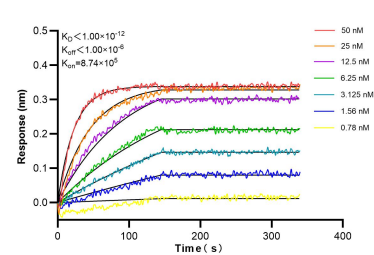
HepG2 cells were subjected to SDS PAGE followed by western blot with 86729-1-RR (Angiotensinogen/AGT antibody) at dilution of 1:10000 incubated at room temperature for 1.5 hours. This data was developed using the same antibody clone with 86729-1-PBS in a different storage buffer formulation.



Serum of six individual healthy human donors was measured. The Angiotensinogen/AGT concentration of detected samples was determined to be 6,000.61 ng/mL with a range of 118.04 - 12,267.72 ng/mL



Sandwich ELISA standard curve of MP02816-1, Human Angiotensinogen/AGT Recombinant Matched Antibody Pair - PBS only. 86729-1-PBS was coated to a plate as the capture antibody and incubated with serial dilutions of standard Eg3099. 86729-3-PBS was HRP conjugated as the detection antibody. Range: 0.313-10 ng/mL.



Biolayer interferometry (BLI) kinetic assays of 86729-1-RR against Human CLEC5A were performed. The affinity constant is below 1 pM.