

For Research Use Only

TMEM35 Recombinant monoclonal antibody, PBS Only (Capture)

Catalog Number:86724-3-PBS



Basic Information

Catalog Number:

86724-3-PBS

Source:

Rabbit

Isotype:

IgG

Immunogen Catalog Number:

AG20589

GenBank Accession Number:

BC078658

GeneID (NCBI):

59353

UNIPROT ID:

Q53FP2

Full Name:

transmembrane protein 35

Calculated MW:

167 aa, 18 kDa

Purification Method:

Protein A purification

CloneNo.:

251680A7

Applications

Tested Applications:

Cytometric bead array, Indirect ELISA

Species Specificity:

human

Background Information

Storage

Storage:

Store at -80°C.

The product is shipped with ice packs. Upon receipt, store it immediately at -80°C

Storage Buffer:

PBS only, pH7.3

For technical support and original validation data for this product please contact:

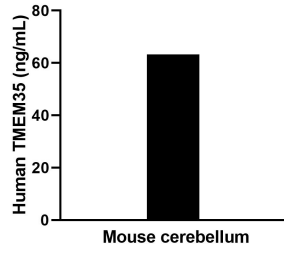
T: 4006900926

E: Proteintech-CN@ptglab.com

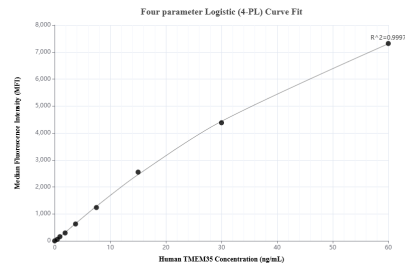
W: ptgcn.com

This product is exclusively available under Proteintech Group brand and is not available to purchase from any other manufacturer.

Selected Validation Data



The mean TMEM35 concentration was determined to be 64.1 ng/mL in Mouse cerebellum tissue extract based on a 6.0 mg/mL extract load.



Cytometric bead array standard curve of MP02630-1, TMEM35 Recombinant Matched Antibody Pair, PBS Only. Capture antibody: 86724-3-PBS. Detection antibody: 86724-2-PBS. Standard: Ag20589. Range: 0.469-60 ng/mL.