

For Research Use Only

MSI1 Recombinant monoclonal antibody, PBS Only (Detector)

Catalog Number: 86723-2-PBS



Basic Information

Catalog Number:

86723-2-PBS

Source:

Rabbit

Isotype:

IgG

Immunogen Catalog Number:

AG26042

GenBank Accession Number:

BC146463

GeneID (NCBI):

4440

UNIPROT ID:

O43347

Full Name:

musashi homolog 1 (Drosophila)

Calculated MW:

362 aa, 39 kDa

Purification Method:

Protein A purification

CloneNo.:

251695G5

Applications

Tested Applications:

IF/ICC, Cytometric bead array, Indirect ELISA

Species Specificity:

human

Background Information

Storage

Storage:

Store at -80°C.

The product is shipped with ice packs. Upon receipt, store it immediately at -80°C

Storage Buffer:

PBS only, pH7.3

For technical support and original validation data for this product please contact:

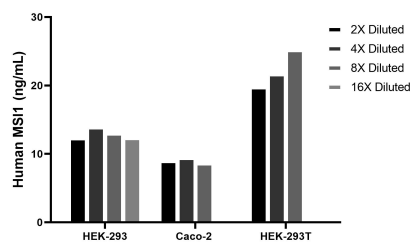
T: 4006900926

E: Proteintech-CN@ptglab.com

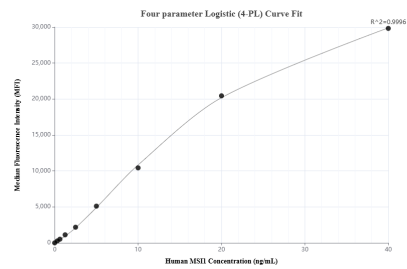
W: ptgcn.com

This product is exclusively available under Proteintech Group brand and is not available to purchase from any other manufacturer.

Selected Validation Data



The mean MSI1 concentration was determined to be 12.9 ng/mL in HEK-293 cell extract based on a 1.2 mg/mL extract load, 9.0 ng/mL in Caco-2 cell extract based on a 1.3 mg/mL extract load, 20.7 ng/mL in HEK-293T cell extract based on a 2.6 mg/mL extract load.



Cytometric bead array standard curve of MP02619-1, MSI1 Recombinant Matched Antibody Pair, PBS Only. Capture antibody: 86723-1-PBS. Detection antibody: 86723-2-PBS. Standard: Ag26042. Range: 0.312-40 ng/mL.