

For Research Use Only

# BPHL Recombinant monoclonal antibody, PBS Only (Capture)

Catalog Number:86717-2-PBS



## Basic Information

Catalog Number:

86717-2-PBS

Source:

Rabbit

Isotype:

IgG

Immunogen Catalog Number:

AG12085

GenBank Accession Number:

BC037778

GeneID (NCBI):

670

UNIPROT ID:

Q86W56

Full Name:

biphenyl hydrolase-like (serine hydrolase)

Calculated MW:

22 kDa, 32 kDa

Purification Method:

Protein A purification

CloneNo.:

251414C3

## Applications

Tested Applications:

Sandwich ELISA, Indirect ELISA

Species Specificity:

human

## Background Information

### Storage

Storage:

Store at -80°C.

**The product is shipped with ice packs. Upon receipt, store it immediately at -80°C**

Storage Buffer:

PBS only, pH7.3

For technical support and original validation data for this product please contact:

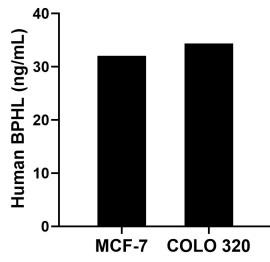
T: 4006900926

E: [Proteintech-CN@ptglab.com](mailto:Proteintech-CN@ptglab.com)

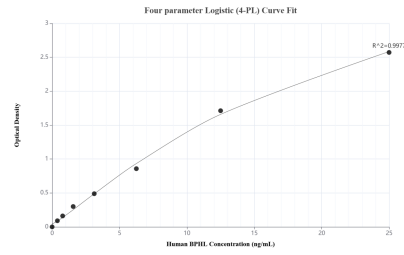
W: [ptgcn.com](http://ptgcn.com)

**This product is exclusively available under Proteintech Group brand and is not available to purchase from any other manufacturer.**

## Selected Validation Data



The mean BPHL concentration was determined to be 32.05 ng/mL in MCF-7 cell extract based on a 1.20 mg/mL extract load and 34.36 ng/mL in COLO 320 cell extract based on a 1.50 mg/mL extract load.



Sandwich ELISA standard curve of MP02728-1, Human BPHL Recombinant Matched Antibody Pair - PBS only. 86717-2-PBS was coated to a plate as the capture antibody and incubated with serial dilutions of standard Ag12085. 86717-1-PBS was HRP conjugated as the detection antibody. Range: 0.391-25 ng/mL