

For Research Use Only

LIX1L Recombinant monoclonal antibody

Catalog Number: 86712-3-RR



Basic Information

Catalog Number:

86712-3-RR

Source:

Rabbit

Isotype:

IgG

Immunogen Catalog Number:

AG22209

GenBank Accession Number:

BC035727

GeneID (NCBI):

128077

UNIPROT ID:

Q8IVB5

Full Name:

Lix1 homolog (mouse)-like

Calculated MW:

337 aa, 37 kDa

Observed MW:

35-40 kDa

Purification Method:

Protein A purification

CloneNo.:

251679D2

Recommended Dilutions:

WB: 1:5000-1:50000

IP: 0.5-4.0 ug for 1.0-3.0 mg of total protein lysate

Applications

Tested Applications:

WB, IP, ELISA

Species Specificity:

human

Positive Controls:

WB : Jurkat cells, HeLa cells, SH-SY5Y cells, K-562 cells, HL-60 cells

IP : Jurkat cells,

Background Information

Limb expression 1-like protein (LIX1L) is a putative RNA binding protein that contains a double-stranded RNA-binding motif. LIX1L is highly expressed in various cancer tissues.

Storage

Storage:

Store at -20°C. Stable for one year after shipment.

Storage Buffer:

PBS with 0.02% sodium azide and 50% glycerol, pH7.3

Aliquoting is unnecessary for -20°C storage

For technical support and original validation data for this product please contact:

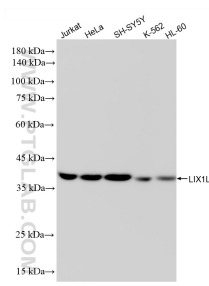
T: 4006900926

E: Proteintech-CN@ptglab.com

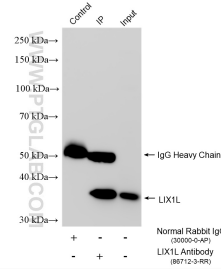
W: ptgcn.com

This product is exclusively available under Proteintech Group brand and is not available to purchase from any other manufacturer.

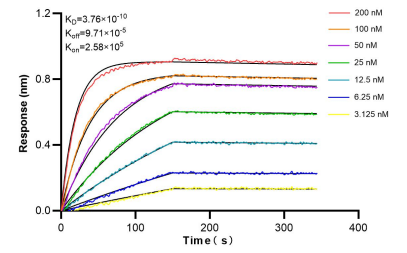
Selected Validation Data



Various lysates were subjected to SDS PAGE followed by western blot with 86712-3-RR (LIX1L antibody) at dilution of 1:10000 incubated at room temperature for 1.5 hours.



IP result of anti-LIX1L (IP:86712-3-RR, 4ug; Detection:86712-3-RR 1:1500) with Jurkat cells lysate 1800 ug.



Bi-layer interferometry (BLI) kinetic assays of 86712-3-RR against Human LIX1L were performed. The affinity constant is 0.376 nM.