

For Research Use Only

LIX1L Recombinant monoclonal antibody, PBS Only (Capture)

Catalog Number:86712-2-PBS



Basic Information

Catalog Number: 86712-2-PBS	GenBank Accession Number: BC035727	Purification Method: Protein A purification
Source: Rabbit	GeneID (NCBI): 128077	CloneNo.: 251679D8
Isotype: IgG	UNIPROT ID: Q8IVB5	
Immunogen Catalog Number: AG22209	Full Name: Lix1 homolog (mouse)-like	
	Calculated MW: 337 aa, 37 kDa	

Applications

Tested Applications:
Cytometric bead array, Indirect ELISA

Species Specificity:
human

Background Information

Storage

Storage:
Store at -80°C.
The product is shipped with ice packs. Upon receipt, store it immediately at -80°C

Storage Buffer:
PBS only, pH7.3

For technical support and original validation data for this product please contact:

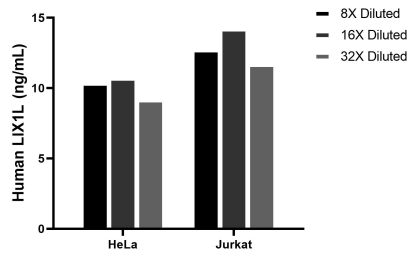
T: 4006900926

E: Proteintech-CN@ptglab.com

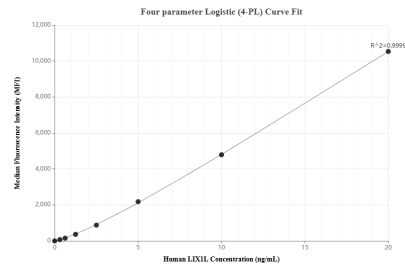
W: ptgcn.com

This product is exclusively available under Proteintech Group brand and is not available to purchase from any other manufacturer.

Selected Validation Data



The mean LIX1L concentration was determined to be 10.1 ng/mL in HeLa cell extract based on a 1.1 mg/mL extract load, 12.9 ng/mL in Jurkat cell extract based on a 1.2 mg/mL extract load.



Cytometric bead array standard curve of MP02604-1, LIX1L Recombinant Matched Antibody Pair, PBS Only. Capture antibody: 86712-2-PBS. Detection antibody: 86712-1-PBS. Standard: Ag22209. Range: 0.312-20 ng/mL.