

For Research Use Only

# RCN3 Recombinant monoclonal antibody, PBS Only (Capture)

Catalog Number: 86710-2-PBS



## Basic Information

<b>Catalog Number:</b> 86710-2-PBS	<b>GenBank Accession Number:</b> BC013436	<b>Purification Method:</b> Protein A purification
<b>Source:</b> Rabbit	<b>GeneID (NCBI):</b> 57333	<b>CloneNo.:</b> 251537D12
<b>Isotype:</b> IgG	<b>UNIPROT ID:</b> Q96D15	
<b>Immunogen Catalog Number:</b> AG26569	<b>Full Name:</b> reticulocalbin 3, EF-hand calcium binding domain	
	<b>Calculated MW:</b> 37 kDa	

## Applications

**Tested Applications:**  
Cytometric bead array, Indirect ELISA

**Species Specificity:**  
human

## Background Information

### Storage

**Storage:**  
Store at -80°C.  
**The product is shipped with ice packs. Upon receipt, store it immediately at -80°C**

**Storage Buffer:**  
PBS only, pH7.3

For technical support and original validation data for this product please contact:

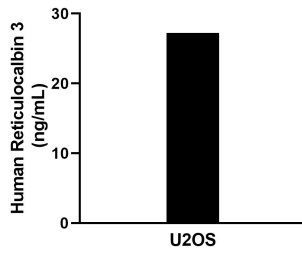
T: 4006900926

E: [Proteintech-CN@ptglab.com](mailto:Proteintech-CN@ptglab.com)

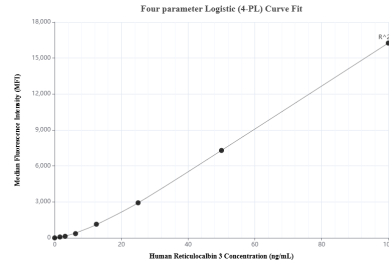
W: [ptgcn.com](http://ptgcn.com)

**This product is exclusively available under Proteintech Group brand and is not available to purchase from any other manufacturer.**

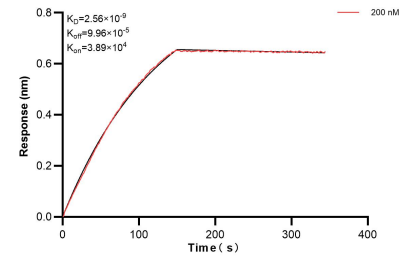
## Selected Validation Data



The mean Reticulocalbin 3 concentration was determined to be 27.5 ng/mL in U2OS cell extract based on a 1.3 mg/mL extract load.



Cytometric bead array standard curve of MP02596-1, Reticulocalbin 3 Recombinant Matched Antibody Pair, PBS Only. Capture antibody: 86710-2-PBS. Detection antibody: 86710-1-PBS. Standard: Ag26569. Range: 1.562-100 ng/mL.



Bi-layer interferometry (BLI) kinetic assay of 86710-2-PBS against Human RCN3 was performed. The affinity constant is 2.56 nM.