

For Research Use Only

RCN3 Recombinant monoclonal antibody, PBS Only (Detector)

Catalog Number:86710-1-PBS



Basic Information

Catalog Number:

86710-1-PBS

Source:

Rabbit

Isotype:

IgG

Immunogen Catalog Number:

AG26569

GenBank Accession Number:

BC013436

GeneID (NCBI):

57333

UNIPROT ID:

Q96D15

Full Name:

reticulocalbin 3, EF-hand calcium binding domain

Calculated MW:

37 kDa

Purification Method:

Protein A purification

CloneNo.:

251537A12

Applications

Tested Applications:

Cytometric bead array, Indirect ELISA

Species Specificity:

human

Background Information

Storage

Storage:

Store at -80°C.

The product is shipped with ice packs. Upon receipt, store it immediately at -80°C

Storage Buffer:

PBS only, pH7.3

For technical support and original validation data for this product please contact:

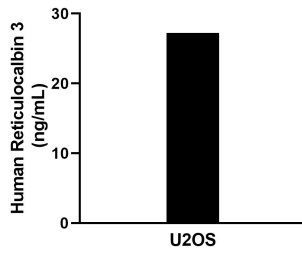
T: 4006900926

E: Proteintech-CN@ptglab.com

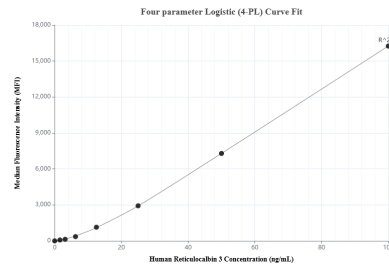
W: ptgcn.com

This product is exclusively available under Proteintech Group brand and is not available to purchase from any other manufacturer.

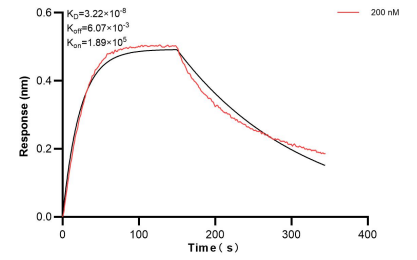
Selected Validation Data



The mean Reticulocalbin 3 concentration was determined to be 27.5 ng/mL in U2OS cell extract based on a 1.3 mg/mL extract load.



Cytometric bead array standard curve of MP02596-1, Reticulocalbin 3 Recombinant Matched Antibody Pair, PBS Only. Capture antibody: 86710-2-PBS. Detection antibody: 86710-1-PBS. Standard: Ag26569. Range: 1.562-100 ng/mL.



Biolayer interferometry (BLI) kinetic assay of 86710-1-PBS against Human RCN3 was performed. The affinity constant is 32.2 nM.