

For Research Use Only

GSTP1 Recombinant monoclonal antibody, PBS Only (Detector)

Catalog Number: 86708-2-PBS



Basic Information

Catalog Number:

86708-2-PBS

Source:

Rabbit

Isotype:

IgG

Immunogen Catalog Number:

AG8731

GenBank Accession Number:

BC010915

GeneID (NCBI):

2950

UNIPROT ID:

P09211

Full Name:

glutathione S-transferase pi 1

Calculated MW:

210 aa, 23 kDa

Purification Method:

Protein A purification

CloneNo.:

251705G6

Applications

Tested Applications:

Cytometric bead array, Sandwich ELISA, Indirect ELISA

Species Specificity:

human

Background Information

Storage

Storage:

Store at -80°C.

The product is shipped with ice packs. Upon receipt, store it immediately at -80°C

Storage Buffer:

PBS only, pH7.3

For technical support and original validation data for this product please contact:

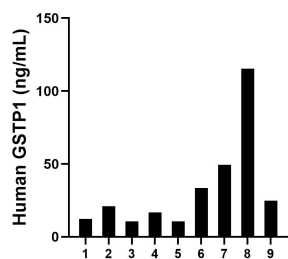
T: 4006900926

E: Proteintech-CN@ptglab.com

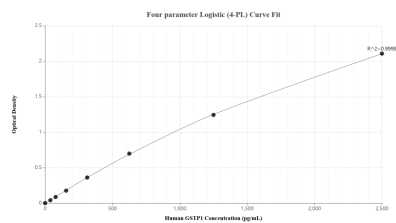
W: ptgcn.com

This product is exclusively available under Proteintech Group brand and is not available to purchase from any other manufacturer.

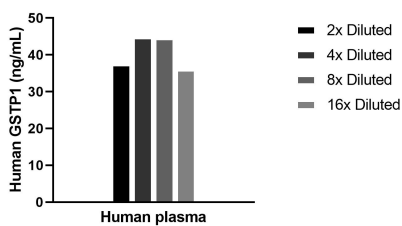
Selected Validation Data



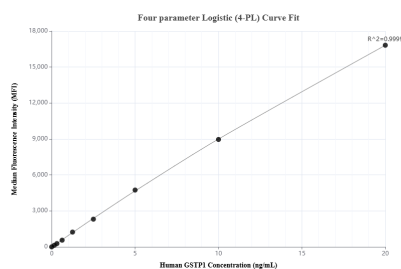
Plasma of nine individual healthy human donors was measured. The GSTP1 concentration of detected samples was determined to be 32.7 ng/mL with a range of 10.5-115.3 ng/mL.



Sandwich ELISA standard curve of MP02614-1, Human GSTP1 Recombinant Matched Antibody Pair - PBS only. 86708-3-PBS was coated to a plate as the capture antibody and incubated with serial dilutions of standard Ag8731. 86708-2-PBS was HRP conjugated as the detection antibody. Range: 39.1-2500 pg/mL.



The mean GSTP1 concentration was determined to be 40.6 ng/mL in Human plasma.



Cytometric bead array standard curve of MP02614-1, GSTP1 Recombinant Matched Antibody Pair, PBS Only. Capture antibody: 86708-3-PBS. Detection antibody: 86708-2-PBS. Standard: Ag8731. Range: 0.156-20 ng/mL.