

For Research Use Only

SUPV3L1 Recombinant monoclonal antibody, PBS Only (Detector)

Catalog Number:86706-3-PBS



Basic Information

Catalog Number: 86706-3-PBS	GenBank Accession Number: BC036112	Purification Method: Protein A purification
Source: Rabbit	GeneID (NCBI): 6832	CloneNo.: 250855A8
Isotype: IgG	UNIPROT ID: Q8IYB8	
Immunogen Catalog Number: AG3542	Full Name: suppressor of var1, 3-like 1 (S. cerevisiae)	
	Calculated MW: 786 aa, 88 kDa	

Applications

Tested Applications:
Cytometric bead array, Sandwich ELISA, Indirect ELISA

Species Specificity:
human

Background Information

Storage

Storage:
Store at -80°C.
The product is shipped with ice packs. Upon receipt, store it immediately at -80°C

Storage Buffer:
PBS only, pH7.3

For technical support and original validation data for this product please contact:

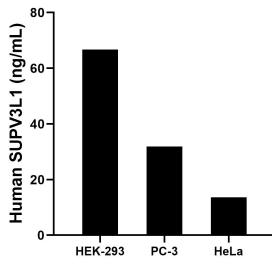
T: 4006900926

E: Proteintech-CN@ptglab.com

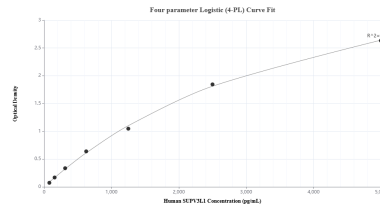
W: ptgcn.com

This product is exclusively available under Proteintech Group brand and is not available to purchase from any other manufacturer.

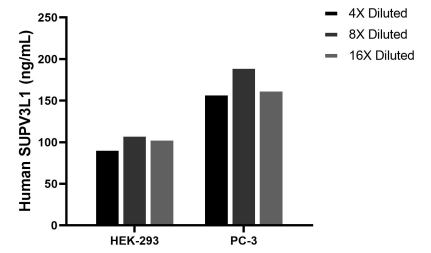
Selected Validation Data



The mean SUPV3L1 concentration was determined to be 66.66 ng/mL in HEK-293 cell extract based on a 1.2 mg/mL extract load, 31.90 ng/mL in PC-3 cell extract based on a 1.3 mg/mL extract load and 13.66 ng/mL in HeLa cell extract based on a 1.2 mg/mL extract load.



Sandwich ELISA standard curve of MP02602-2, Human SUPV3L1 Recombinant Matched Antibody Pair - PBS only. 86706-2-PBS was coated to a plate as the capture antibody and incubated with serial dilutions of standard Ag3542. 86706-3-PBS was HRP conjugated as the detection antibody. Range: 78.1-5000 pg/mL



The mean SUPV3L1 concentration was determined to be 102.3 ng/mL in HEK-293 cell extract based on a 1.2 mg/mL extract load, 171.2 ng/mL in PC-3 cell extract based on a 1.3 mg/mL extract load.



Cytometric bead array standard curve of MP02602-1, SUPV3L1 Recombinant Matched Antibody Pair, PBS Only. Capture antibody: 86706-1-PBS. Detection antibody: 86706-3-PBS. Standard: Ag3542. Range: 1.562-200 ng/mL