

For Research Use Only

SUPV3L1 Recombinant monoclonal antibody, PBS Only (Capture)

Catalog Number:86706-1-PBS



Basic Information

Catalog Number:

86706-1-PBS

Source:

Rabbit

Isotype:

IgG

Immunogen Catalog Number:

AG3542

GenBank Accession Number:

BC036112

GeneID (NCBI):

6832

UNIPROT ID:

Q8IYB8

Full Name:

suppressor of var1, 3-like 1 (S. cerevisiae)

Calculated MW:

786 aa, 88 kDa

Observed MW:

70-80 kDa

Purification Method:

Protein A purification

CloneNo.:

250855G8

Applications

Tested Applications:

WB, IHC, IF/ICC, Cytometric bead array, Indirect ELISA

Species Specificity:

human, mouse, rat

Background Information

SUPV3L1 is a major helicase player in mitochondrial RNA metabolism. It is involved in the degradation of non-coding mitochondrial transcripts (MT-ncRNA) and tRNA-like molecules (PMID: 29967381).

Storage

Storage:

Store at -80°C.

The product is shipped with ice packs. Upon receipt, store it immediately at -80°C

Storage Buffer:

PBS only, pH7.3

For technical support and original validation data for this product please contact:

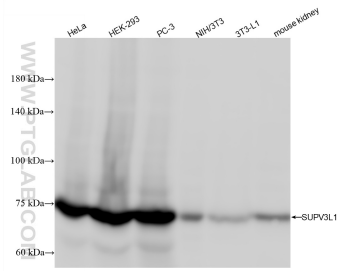
T: 4006900926

E: Proteintech-CN@ptglab.com

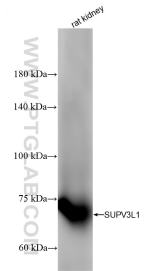
W: ptgcn.com

This product is exclusively available under Proteintech Group brand and is not available to purchase from any other manufacturer.

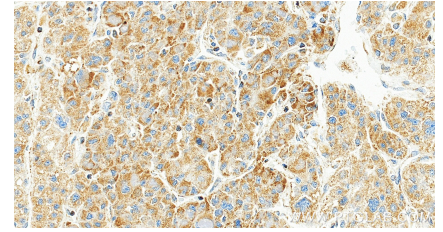
Selected Validation Data



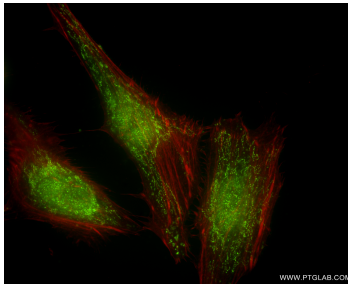
Various lysates were subjected to SDS PAGE followed by western blot with 86706-1-RR (SUPV3L1 antibody) at dilution of 1:10000 incubated at room temperature for 1.5 hours. This data was developed using the same antibody clone with 86706-1-PBS in a different storage buffer formulation.



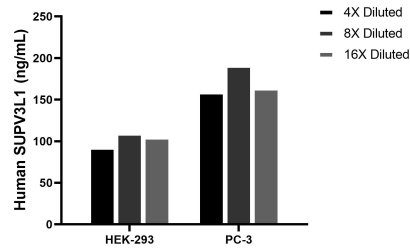
rat kidney tissue were subjected to SDS PAGE followed by western blot with 86706-1-RR (SUPV3L1 antibody) at dilution of 1:10000 incubated at room temperature for 1.5 hours. This data was developed using the same antibody clone with 86706-1-PBS in a different storage buffer formulation.



Immunohistochemical analysis of paraffin-embedded human liver cancer tissue slide using 86706-1-RR (SUPV3L1 antibody) at dilution of 1:1000 (under 20x lens). Heat mediated antigen retrieval with Tris-EDTA buffer (pH 9.0). This data was developed using the same antibody clone with 86706-1-PBS in a different storage buffer formulation.



Immunofluorescent analysis of (4% PFA) fixed HeLa cells using SUPV3L1 antibody (86706-1-RR, Clone: 250855G8) at dilution of 1:200 and CoraLite®488-Conjugated Goat Anti-Rabbit IgG(H+L) (SA00013-2), CL594-Phalloidin (red). This data was developed using the same antibody clone with 86706-1-PBS in a different storage buffer formulation.



The mean SUPV3L1 concentration was determined to be 102.3 ng/mL in HEK-293 cell extract based on a 1.2 mg/mL extract load, 171.2 ng/mL in PC-3 cell extract based on a 1.3 mg/mL extract load.



Cytometric bead array standard curve of MP02602-1, SUPV3L1 Recombinant Matched Antibody Pair, PBS Only. Capture antibody: 86706-1-PBS. Detection antibody: 86706-3-PBS. Standard: Ag3542. Range: 1.562-200 ng/mL