

For Research Use Only

# CXCL7/PPBP Recombinant monoclonal antibody, PBS Only (Capture)

Catalog Number: 86698-3-PBS



## Basic Information

Catalog Number:

86698-3-PBS

Source:

Rabbit

Isotype:

IgG

Immunogen Catalog Number:

EG3690

GenBank Accession Number:

NM\_002704.3

GeneID (NCBI):

5473

UNIPROT ID:

P02775

Full Name:

pro-platelet basic protein (chemokine (C-X-C motif) ligand 7)

Calculated MW:

14kDa

Purification Method:

Protein A purification

CloneNo.:

250712E2

## Applications

Tested Applications:

Sandwich ELISA, Indirect ELISA

Species Specificity:

human

## Background Information

### Storage

Storage:

Store at -80°C.

**The product is shipped with ice packs. Upon receipt, store it immediately at -80°C**

Storage Buffer:

PBS only, pH7.3

For technical support and original validation data for this product please contact:

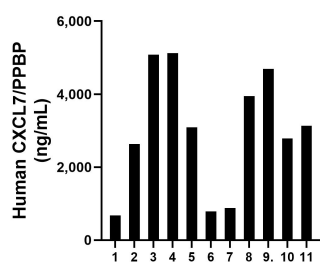
T: 4006900926

E: [Proteintech-CN@ptglab.com](mailto:Proteintech-CN@ptglab.com)

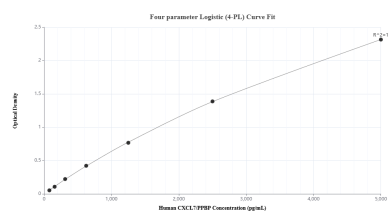
W: [ptgcn.com](http://ptgcn.com)

**This product is exclusively available under Proteintech Group brand and is not available to purchase from any other manufacturer.**

## Selected Validation Data



Plasma of eleven individual healthy human donors was measured. The human CXCL7/PPBP concentration of detected samples was determined to be 3,322.29 ng/mL with a range of 678.34 - 5,123.18 ng/mL



Sandwich ELISA standard curve of MP02754-1, Human CXCL7/PPBP Recombinant Matched Antibody Pair - PBS only. 86698-3-PBS was coated to a plate as the capture antibody and incubated with serial dilutions of standard Eg3690. 86698-2-PBS was HRP conjugated as the detection antibody. Range: 78.1-5000 pg/mL