

For Research Use Only

KCNIP2 Recombinant monoclonal antibody, PBS Only (Capture)

Catalog Number:86696-1-PBS



Basic Information

Catalog Number: 86696-1-PBS	GenBank Accession Number: BC034685	Purification Method: Protein A purification
Source: Rabbit	GeneID (NCBI): 30819	CloneNo.: 251560C3
Isotype: IgG	UNIPROT ID: Q9NS61	
Immunogen Catalog Number: AG14111	Full Name: Kv channel interacting protein 2	
	Calculated MW: 270 aa, 31 kDa	
	Observed MW: 31-35 kDa	

Applications

Tested Applications:
WB, Sandwich ELISA, Indirect ELISA

Species Specificity:
human, mouse, rat

Background Information

KCNIP2 is a member of the family of voltage-gated potassium (Kv) channel-interacting proteins (KCNIPs), which belongs to the recoverin branch of the EF-hand superfamily. Members of the KCNIP family are small calcium binding proteins. They all have EF-hand-like domains, and differ from each other in the N-terminus. They are integral subunit components of native Kv4 channel complexes. They may regulate A-type currents, and hence neuronal excitability, in response to changes in intracellular calcium. Multiple alternatively spliced transcript variants encoding distinct isoforms have been identified from this gene.

Storage

Storage:
Store at -80°C.
The product is shipped with ice packs. Upon receipt, store it immediately at -80°C

Storage Buffer:
PBS only, pH7.3

For technical support and original validation data for this product please contact:

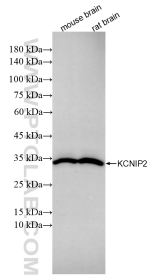
T: 4006900926

E: Proteintech-CN@ptglab.com

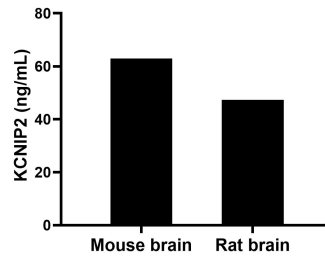
W: ptgcn.com

This product is exclusively available under Proteintech Group brand and is not available to purchase from any other manufacturer.

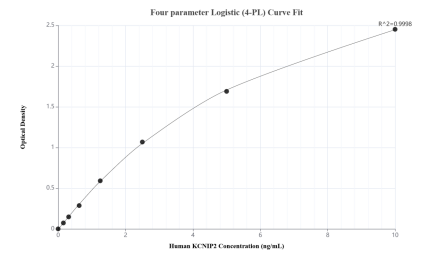
Selected Validation Data



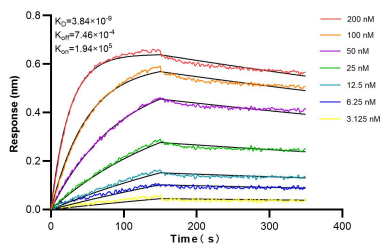
Various lysates were subjected to SDS PAGE followed by western blot with 86696-1-RR (KCNIP2 antibody) at dilution of 1:10000 incubated at room temperature for 1.5 hours. This data was developed using the same antibody clone with 86696-1-PBS in a different storage buffer formulation.



The mean KCNIP2 concentration was determined to be 62.92 ng/mL in mouse brain extract based on a 7.00 mg/mL extract load and 47.26 ng/mL in rat brain extract based on a 8.20 mg/mL extract load.



Sandwich ELISA standard curve of MP02717-1, Human KCNIP2 Recombinant Matched Antibody Pair - PBS only. 86696-1-PBS was coated to a plate as the capture antibody and incubated with serial dilutions of standard Ag14111. 86696-2-PBS was HRP conjugated as the detection antibody. Range: 0.156-10 ng/mL.



Biolayer interferometry (BLI) kinetic assays of 86696-1-RR against Human KCNIP2 were performed. The affinity constant is 3.84 nM.