

For Research Use Only

CROP Recombinant monoclonal antibody

Catalog Number:86690-1-RR



Basic Information

Catalog Number: 86690-1-RR	GenBank Accession Number: BC056409	Purification Method: Protein A purification
Source: Rabbit	GeneID (NCBI): 51747	CloneNo.: 251672C12
Isotype: IgG	UNIPROT ID: O95232	Recommended Dilutions: WB: 1:5000-1:50000 IF/ICC: 1:400-1:1600
Immunogen Catalog Number: AG5961	Full Name: cisplatin resistance-associated overexpressed protein	
	Calculated MW: 51 kDa	
	Observed MW: 55-58 kDa	

Applications

Tested Applications: WB, IF/ICC, ELISA	Positive Controls:
Species Specificity: human, mouse	WB : Jurkat cells, RT-4 cells, HepG2 cells, mouse brain tissue
	IF/ICC : HepG2 cells,

Background Information

CROP, a putative SR protein, contain cystine/histidine motifs and leucine zipper-like repeats in the N-terminal half and consists mostly of charged and polar amino acids in the C-terminal half. CROP has a high expression in heart, brain, pancreas, thymus, and weak in lung, liver and kidney. As the human homologue of yeast Luc7p, CROP is supported to be participated in 5'-splice site recognize and is essential for vegetative growth. This antibody raised against part of N-terminus of CROP of human origin, and can recognize a ~58kDa band of CROP.

Storage

Storage:
Store at -20°C. Stable for one year after shipment.
Storage Buffer:
PBS with 0.02% sodium azide and 50% glycerol, pH7.3
Aliquoting is unnecessary for -20°C storage

For technical support and original validation data for this product please contact:

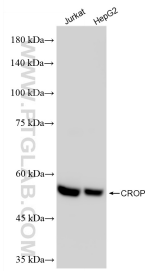
T: 4006900926

E: Proteintech-CN@ptglab.com

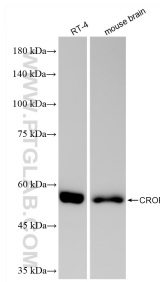
W: ptgcn.com

This product is exclusively available under Proteintech Group brand and is not available to purchase from any other manufacturer.

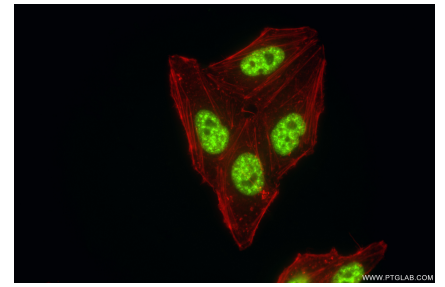
Selected Validation Data



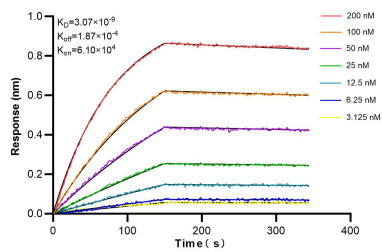
Various lysates were subjected to SDS PAGE followed by western blot with 86690-1-RR (CROP antibody) at dilution of 1:10000 incubated at room temperature for 1.5 hours.



Various lysates were subjected to SDS PAGE followed by western blot with 86690-1-RR (CROP antibody) at dilution of 1:10000 incubated at room temperature for 1.5 hours.



Immunofluorescent analysis of (4% PFA) fixed HepG2 cells using CROP antibody (86690-1-RR, Clone: 251672C12) at dilution of 1:800 and CoraLite®488-Conjugated Goat Anti-Rabbit IgG(H+L) (SA00013-2), CL594-Phalloidin (red).



Biolayer interferometry (BLI) kinetic assays of 86690-1-RR against Human CROP were performed. The affinity constant is 3.07 nM.