

For Research Use Only

CROP Recombinant monoclonal antibody, PBS Only

Catalog Number:86690-1-PBS



Basic Information

Catalog Number:

86690-1-PBS

Source:

Rabbit

Isotype:

IgG

Immunogen Catalog Number:

AG5961

GenBank Accession Number:

BC056409

GeneID (NCBI):

51747

UNIPROT ID:

O95232

Full Name:

cisplatin resistance-associated overexpressed protein

Calculated MW:

51 kDa

Observed MW:

55-58 kDa

Purification Method:

Protein A purification

CloneNo.:

251672C12

Applications

Tested Applications:

WB, IF/ICC, Indirect ELISA

Species Specificity:

human, mouse

Background Information

CROP, a putative SR protein, contain cystine/histidine motifs and leucine zipper-like repeats in the N-terminal half and consists mostly of charged and polar amino acids in the C-terminal half. CROP has a high expression in heart, brain, pancreas, thymus, and weak in lung, liver and kidney. As the human homologue of yeast Luc7p, CROP is supported to be participated in 5'-splice site recognize and is essential for vegetative growth. This antibody raised against part of N-terminus of CROP of human origin, and can recognize a ~58kDa band of CROP.

Storage

Storage:

Store at -80°C.

The product is shipped with ice packs. Upon receipt, store it immediately at -80°C

Storage Buffer:

PBS only, pH7.3

For technical support and original validation data for this product please contact:

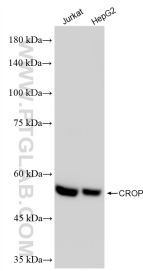
T: 4006900926

E: Proteintech-CN@ptglab.com

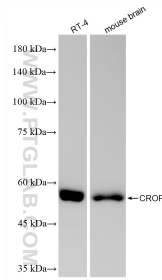
W: ptgcn.com

This product is exclusively available under Proteintech Group brand and is not available to purchase from any other manufacturer.

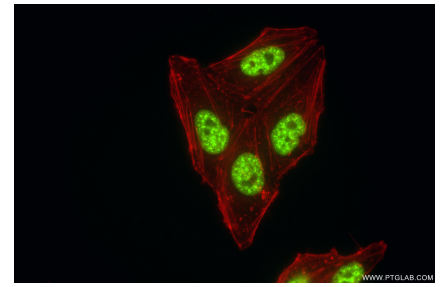
Selected Validation Data



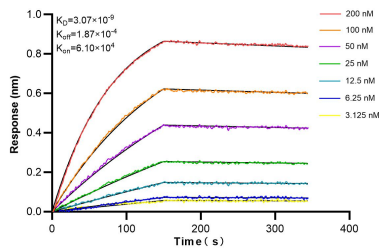
Various lysates were subjected to SDS PAGE followed by western blot with 86690-1-RR (CROP antibody) at dilution of 1:10000 incubated at room temperature for 1.5 hours. This data was developed using the same antibody clone with 86690-1-PBS in a different storage buffer formulation.



Various lysates were subjected to SDS PAGE followed by western blot with 86690-1-RR (CROP antibody) at dilution of 1:10000 incubated at room temperature for 1.5 hours. This data was developed using the same antibody clone with 86690-1-PBS in a different storage buffer formulation.



Immunofluorescent analysis of (4% PFA) fixed HepG2 cells using CROP antibody (86690-1-RR, Clone: 251672C12) at dilution of 1:800 and Coralite@488-Conjugated Goat Anti-Rabbit IgG(H+L) (SA00013-2), CL594-Phalloidin (red). This data was developed using the same antibody clone with 86690-1-PBS in a different storage buffer formulation.



Biolayer interferometry (BLI) kinetic assays of 86690-1-RR against Human CROP were performed. The affinity constant is 3.07 nM.