

For Research Use Only

# CKAP2 Recombinant monoclonal antibody, PBS Only

Catalog Number:86689-1-PBS



## Basic Information

<b>Catalog Number:</b> 86689-1-PBS	<b>GenBank Accession Number:</b> BC136332	<b>Purification Method:</b> Protein A purification
<b>Source:</b> Rabbit	<b>GeneID (NCBI):</b> 26586	<b>CloneNo.:</b> 251698F2
<b>Isotype:</b> IgG	<b>UNIPROT ID:</b> Q8WWK9	
<b>Immunogen Catalog Number:</b> AG21901	<b>Full Name:</b> cytoskeleton associated protein 2	
	<b>Calculated MW:</b> 683 aa, 77 kDa	
	<b>Observed MW:</b> 75-85 kDa	

## Applications

**Tested Applications:**  
WB, IF/ICC, Indirect ELISA

**Species Specificity:**  
human, mouse

## Background Information

Cytoskeleton-associated protein 2 (CKAP2), also known as tumor-associated microtubule-associated protein (TMAP), is implicated in the regulation of cell proliferation (PMID: 30119212). CKAP2 is a MAP expressed during mitosis that localizes to centrosomes and spindles before being targeted for degradation by the anaphase-promoting complex/cyclosome at mitotic exit (PMID: 38381793, 17339342).

## Storage

**Storage:**  
Store at -80°C.  
**The product is shipped with ice packs. Upon receipt, store it immediately at -80°C**

**Storage Buffer:**  
PBS only, pH7.3

For technical support and original validation data for this product please contact:

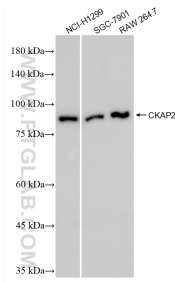
T: 4006900926

E: [Proteintech-CN@ptglab.com](mailto:Proteintech-CN@ptglab.com)

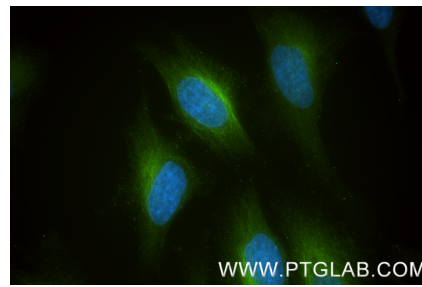
W: [ptgcn.com](http://ptgcn.com)

**This product is exclusively available under Proteintech Group brand and is not available to purchase from any other manufacturer.**

## Selected Validation Data



Various lysates were subjected to SDS PAGE followed by western blot with 86689-1-RR (CKAP2 antibody) at dilution of 1:5000 incubated at room temperature for 1.5 hours. This data was developed using the same antibody clone with 86689-1-PBS in a different storage buffer formulation.



Immunofluorescent analysis of (-20°C Methanol) fixed HeLa cells using CKAP2 antibody (86689-1-RR, Clone: 251698F2) at dilution of 1:800 and CoraLite® 488-Conjugated Goat Anti-Rabbit IgG(H+L) (SA00013-2). This data was developed using the same antibody clone with 86689-1-PBS in a different storage buffer formulation.