

For Research Use Only

# Mouse PTPRZ Recombinant monoclonal antibody, PBS Only (Capture/Detector)

Catalog Number: 86687-3-PBS



## Basic Information

Catalog Number:

86687-3-PBS

Source:

Rabbit

Isotype:

IgG

Immunogen Catalog Number:

EG6825

GenBank Accession Number:

NM\_001081306.1

GeneID (NCBI):

19283

UNIPROT ID:

B9EKR1

Full Name:

protein tyrosine phosphatase, receptor type Z, polypeptide 1

Calculated MW:

254 kDa

Purification Method:

Protein A purification

CloneNo.:

251663D6

## Applications

Tested Applications:

Cytometric bead array, Sandwich ELISA, Indirect ELISA

Species Specificity:

mouse

## Background Information

### Storage

Storage:

Store at -80°C.

**The product is shipped with ice packs. Upon receipt, store it immediately at -80°C**

Storage Buffer:

PBS only, pH7.3

For technical support and original validation data for this product please contact:

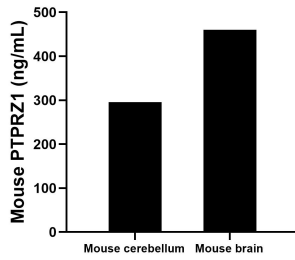
T: 4006900926

E: [Proteintech-CN@ptglab.com](mailto:Proteintech-CN@ptglab.com)

W: [ptgcn.com](http://ptgcn.com)

**This product is exclusively available under Proteintech Group brand and is not available to purchase from any other manufacturer.**

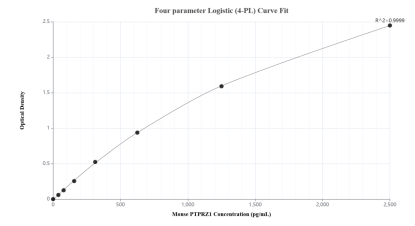
## Selected Validation Data



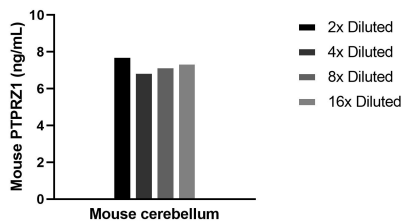
The mean PTPRZ1 concentration was determined to be 295.4 ng/mL in mouse cerebellum tissue extract based on a 2.9 mg/mL extract load and 460.1 ng/mL in mouse brain tissue extract based on a 3.2 mg/mL extract load.



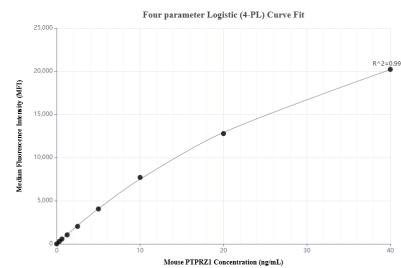
The mean PTPRZ1 concentration was determined to be 1.5 ng/mL in mouse kidney tissue extract based on a 7.8 mg/mL extract load.



Sandwich ELISA standard curve of MP02599-2, Mouse PTPRZ1 Recombinant Matched Antibody Pair - PBS only. 86687-1-PBS was coated to a plate as the capture antibody and incubated with serial dilutions of standard Eg6825. 86687-3-PBS was HRP conjugated as the detection antibody. Range: 39.1-2500 pg/mL.



The mean PTPRZ1 concentration was determined to be 7.3 ng/mL in mouse cerebellum tissue extract based on a 2.9 mg/mL extract load.



Cytometric bead array standard curve of MP02599-1, MOUSE PTPRZ1 Recombinant Matched Antibody Pair, PBS Only. Capture antibody: 86687-3-PBS. Detection antibody: 86687-2-PBS. Standard: Eg6825. Range: 0.312-40 ng/mL.