

For Research Use Only

MBD3 Recombinant monoclonal antibody, PBS Only (Detector)

Catalog Number:86681-2-PBS



Basic Information

Catalog Number: 86681-2-PBS	GenBank Accession Number: BC043619	Purification Method: Protein A purification
Source: Rabbit	GeneID (NCBI): 53615	CloneNo.: 250922E11
Isotype: IgG	UNIPROT ID: O95983	
Immunogen Catalog Number: AG5531	Full Name: methyl-CpG binding domain protein 3	
	Calculated MW: 33 kDa	
	Observed MW: 35 kDa	

Applications

Tested Applications:
WB, IF/ICC, Cytometric bead array, Sandwich ELISA, Indirect ELISA

Species Specificity:
human

Background Information

Methyl-CpG-binding domain 3 (Mbd3), a member among the five-MBD protein family, is unique in its ability to specifically recognize 5'-hydroxymethyl-cytosine (5'-hmC), an epigenetic marker that is highly enriched in stem cells and cancer.

Storage

Storage:
Store at -80°C.
The product is shipped with ice packs. Upon receipt, store it immediately at -80°C

Storage Buffer:
PBS only, pH7.3

For technical support and original validation data for this product please contact:

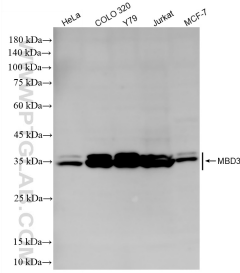
T: 4006900926

E: Proteintech-CN@ptglab.com

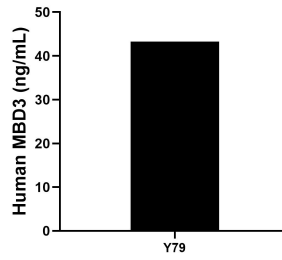
W: ptgcn.com

This product is exclusively available under Proteintech Group brand and is not available to purchase from any other manufacturer.

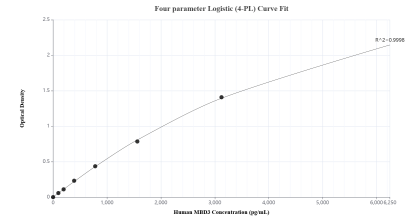
Selected Validation Data



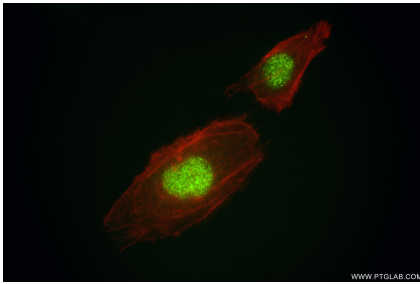
Various lysates were subjected to SDS PAGE followed by western blot with 86681-2-RR (MBD3 antibody) at dilution of 1:5000 incubated at room temperature for 1.5 hours. This data was developed using the same antibody clone with 86681-2-PBS in a different storage buffer formulation.



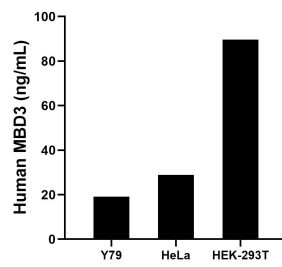
The mean MBD3 concentration was determined to be 43.2 ng/mL in Y79 cell extract based on a 1.1 mg/mL extract load.



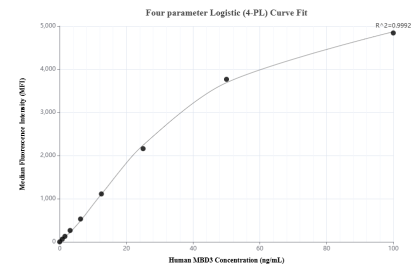
Sandwich ELISA standard curve of MP02598-2, Human MBD3 Recombinant Matched Antibody Pair - PBS only. 86681-4-PBS was coated to a plate as the capture antibody and incubated with serial dilutions of standard Ag5531. 86681-2-PBS was HRP conjugated as the detection antibody. Range: 97.7-6250 pg/mL.



Immunofluorescent analysis of (4% PFA) fixed HeLa cells using MBD3 antibody (86681-2-RR, Clone: 250922E11) at dilution of 1:800 and CoraLite@488-Conjugated Goat Anti-Rabbit IgG(H+L) (SA00013-2), CL594-Phalloidin (red). This data was developed using the same antibody clone with 86681-2-PBS in a different storage buffer formulation.



The mean MBD3 concentration was determined to be 19.2 ng/mL in Y79 cell extract based on a 1.1 mg/mL extract load, 28.9 ng/mL in HeLa cell extract based on a 1.2 mg/mL extract load, 89.6 ng/mL in HEK-293 cell extract based on a 3.2 mg/mL extract load.



Cytometric bead array standard curve of MP02598-1, MBD3 Recombinant Matched Antibody Pair, PBS Only. Capture antibody: 86681-3-PBS. Detection antibody: 86681-2-PBS. Standard: Ag5531. Range: 0.781-100 ng/mL.