

For Research Use Only

CLEC-2/CLEC1B Recombinant monoclonal antibody, PBS Only (Detector)

Catalog Number: 86674-2-PBS



Basic Information

Catalog Number: 86674-2-PBS	GenBank Accession Number: NM_016509.4	Purification Method: Protein A purification
Concentration: 1 mg/ml	GeneID (NCBI): 51266	CloneNo.: 251282D12
Source: Rabbit	UNIPROT ID: Q9P126	
Isotype: IgG	Full Name: C-type lectin domain family 1, member B	
Immunogen Catalog Number: EG4774	Calculated MW: 27 kDa	

Applications

Tested Applications:
Sandwich ELISA, Indirect ELISA

Species Specificity:
human

Background Information

Storage

Storage:
Store at -80°C.
The product is shipped with ice packs. Upon receipt, store it immediately at -80°C

Storage Buffer:
PBS only, pH7.3

For technical support and original validation data for this product please contact:

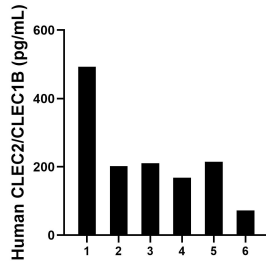
T: 4006900926

E: Proteintech-CN@ptglab.com

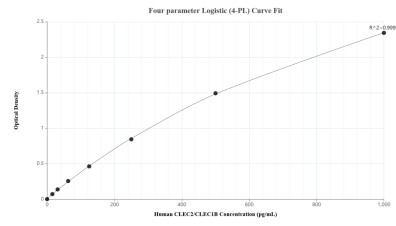
W: ptgcn.com

This product is exclusively available under Proteintech Group brand and is not available to purchase from any other manufacturer.

Selected Validation Data



Plasma of six individual healthy human donors was measured. The CLEC2/CLEC1B concentration of detected samples was determined to be 226.8 pg/mL with a range of 72.6-492.6 pg/mL.



Sandwich ELISA standard curve of MP02704-1, Human CLEC2/CLEC1B Recombinant Matched Antibody Pair - PBS only. 86674-3-PBS was coated to a plate as the capture antibody and incubated with serial dilutions of standard Eg4774. 86674-2-PBS was HRP conjugated as the detection antibody. Range: 15.6-1000 pg/mL.