

For Research Use Only

DDR GK1 Recombinant monoclonal antibody, PBS Only (Capture)

Catalog Number: 86667-2-PBS



Basic Information

Catalog Number: 86667-2-PBS	GenBank Accession Number: BC000643	Purification Method: Protein A purification
Source: Rabbit	GeneID (NCBI): 65992	CloneNo.: 251582G2
Isotype: IgG	UNIPROT ID: Q96HY6	
Immunogen Catalog Number: AG13742	Full Name: DDR GK domain containing 1	
	Calculated MW: 314 aa, 36 kDa	
	Observed MW: 36-46 kDa	

Applications

Tested Applications:
WB, IF/ICC, Cytometric bead array, Indirect ELISA

Species Specificity:
human, mouse, rat

Background Information

DDR GK1, also name as C20orf116, is a member of the DDR GK domain-containing protein family with unknown function. Depletion of DDR GK1 inhibits cell proliferation and invasion. Expression of NF- κ B target genes showed the most significant decrease after depleting of DDR GK1, suggesting that DDR GK1 may play an important role in the NF- κ B signaling pathway. DDR GK1 interacts with I κ B α and regulates its stability, thereby regulates the NF- κ B transcriptional activity. DDR GK1 acts as an important regulator of the NF- κ B pathway. (PMID: 23675531)

Storage

Storage:
Store at -80°C.
The product is shipped with ice packs. Upon receipt, store it immediately at -80°C

Storage Buffer:
PBS only, pH7.3

For technical support and original validation data for this product please contact:

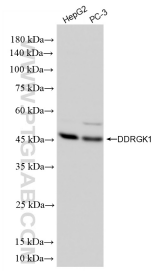
T: 4006900926

E: Proteintech-CN@ptglab.com

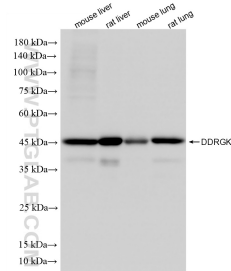
W: ptgcn.com

This product is exclusively available under Proteintech Group brand and is not available to purchase from any other manufacturer.

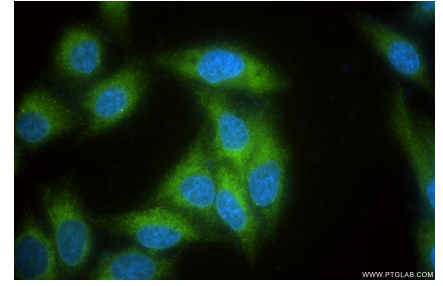
Selected Validation Data



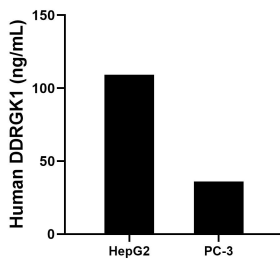
Various lysates were subjected to SDS PAGE followed by western blot with 86667-2-RR (DDRKG1 antibody) at dilution of 1:10000 incubated at room temperature for 1.5 hours. This data was developed using the same antibody clone with 86667-2-PBS in a different storage buffer formulation.



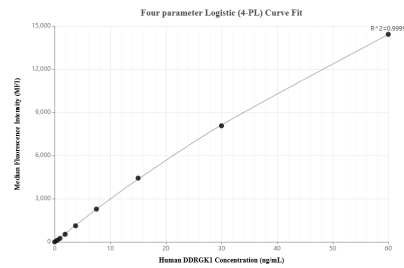
Various lysates were subjected to SDS PAGE followed by western blot with 86667-2-RR (DDRKG1 antibody) at dilution of 1:10000 incubated at room temperature for 1.5 hours. This data was developed using the same antibody clone with 86667-2-PBS in a different storage buffer formulation.



Immunofluorescent analysis of (-20°C Ethanol) fixed HepG2 cells using DDRKG1 antibody (86667-2-RR, Clone: 251582G2) at dilution of 1:500 and CoraLite®488-Conjugated Goat Anti-Rabbit IgG(H+L) (SA00013-2). This data was developed using the same antibody clone with 86667-2-PBS in a different storage buffer formulation.



The mean DDRGK1 concentration was determined to be 109.2 ng/mL in HepG2 cell extract based on a 1.2 mg/mL extract load, 36.0 ng/mL in PC-3 cell extract based on a 1.3 mg/mL extract load.



Cytometric bead array standard curve of MP02579-1, DDRGK1 Recombinant Matched Antibody Pair, PBS Only. Capture antibody: 86667-2-PBS. Detection antibody: 86667-1-PBS. Standard: Ag13742. Range: 0.469-60 ng/mL.