

For Research Use Only

LPL Recombinant antibody, PBS Only (Capture)

Catalog Number: 86666-2-PBS



Basic Information

Catalog Number: 86666-2-PBS	GenBank Accession Number: BC011353	Purification Method: Protein A purification
Concentration: 1 mg/ml	GeneID (NCBI): 4023	CloneNo.: 250965D11
Source: Rabbit	UNIPROT ID: P06858	
Isotype: IgG	Full Name: lipoprotein lipase	
Immunogen Catalog Number: AG29782	Calculated MW: 475 aa, 53 kDa	

Applications

Tested Applications:
Sandwich ELISA, Indirect ELISA, Sample test

Species Specificity:
human

Background Information

Storage

Storage:
Store at -80°C.
The product is shipped with ice packs. Upon receipt, store it immediately at -80°C

Storage Buffer:
PBS only, pH7.3

For technical support and original validation data for this product please contact:

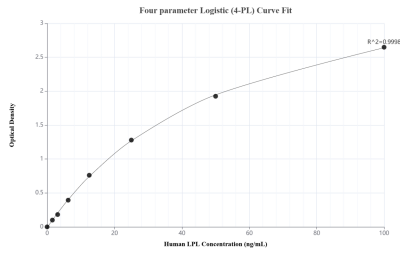
T: 4006900926

E: Proteintech-CN@ptglab.com

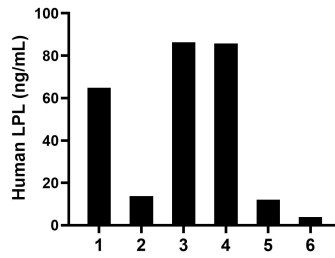
W: ptgcn.com

This product is exclusively available under Proteintech Group brand and is not available to purchase from any other manufacturer.

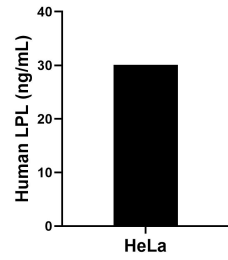
Selected Validation Data



Sandwich ELISA standard curve of MP02594-1, Human LPL Recombinant Matched Antibody Pair - PBS only. 86666-2-PBS was coated to a plate as the capture antibody and incubated with serial dilutions of standard Ag29782. 86666-1-PBS was HRP conjugated as the detection antibody. Range: 1.56-100 ng/mL



Human milk of six individual healthy human donors was measured. The LPL concentration of detected samples was determined to be 44.44 ng/mL with a range of 3.94-86.27 ng/mL.



The mean LPL concentration was determined to be 30.1 ng/mL in HeLa cell extract based on a 1.2 mg/mL extract load.