

For Research Use Only

RHOB Recombinant monoclonal antibody, PBS Only (Capture)

Catalog Number:86663-2-PBS



Basic Information

Catalog Number: 86663-2-PBS	GenBank Accession Number: BC066954	Purification Method: Protein A purification
Source: Rabbit	GeneID (NCBI): 388	CloneNo.: 251662A5
Isotype: IgG	UNIPROT ID: P62745	
Immunogen Catalog Number: AG5593	Full Name: ras homolog gene family, member B	
	Calculated MW: 22 kDa	

Applications

Tested Applications:
Cytometric bead array, Indirect ELISA

Species Specificity:
human

Background Information

Storage

Storage:
Store at -80°C.
The product is shipped with ice packs. Upon receipt, store it immediately at -80°C

Storage Buffer:
PBS only, pH7.3

For technical support and original validation data for this product please contact:

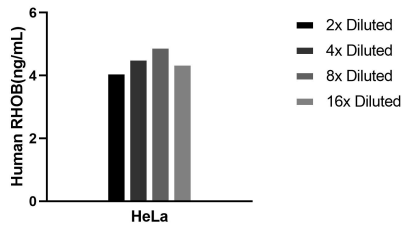
T: 4006900926

E: Proteintech-CN@ptglab.com

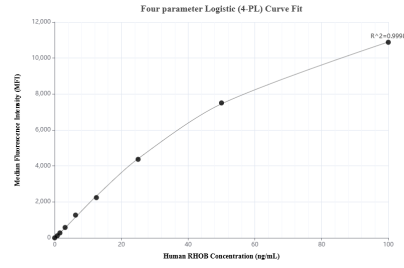
W: ptgcn.com

This product is exclusively available under Proteintech Group brand and is not available to purchase from any other manufacturer.

Selected Validation Data



The mean RHOB concentration was determined to be 4.5 ng/mL in HeLa cell extract based on a 1.2 mg/mL extract load.



Cytometric bead array standard curve of MP02581-1, RHOB Recombinant Matched Antibody Pair, PBS Only. Capture antibody: 86663-2-PBS. Detection antibody: 86663-1-PBS. Standard: Ag5593. Range: 0.781-100 ng/mL