

For Research Use Only

CLTC Recombinant monoclonal antibody, PBS Only (Capture)

Catalog Number:86660-2-PBS



Basic Information

Catalog Number: 86660-2-PBS	GenBank Accession Number: BC054489	Purification Method: Protein A purification
Source: Rabbit	GeneID (NCBI): 1213	CloneNo.: 251634F10
Isotype: IgG	UNIPROT ID: Q00610	
Immunogen Catalog Number: AG25041	Full Name: clathrin, heavy chain (Hc)	
	Calculated MW: 192 kDa	

Applications

Tested Applications:
Cytometric bead array, Sandwich ELISA, Indirect ELISA

Species Specificity:
human

Background Information

Storage

Storage:
Store at -80°C.
The product is shipped with ice packs. Upon receipt, store it immediately at -80°C

Storage Buffer:
PBS only, pH7.3

For technical support and original validation data for this product please contact:

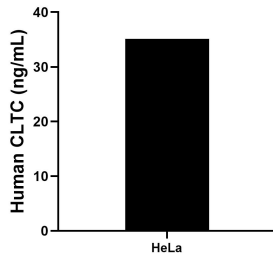
T: 4006900926

E: Proteintech-CN@ptglab.com

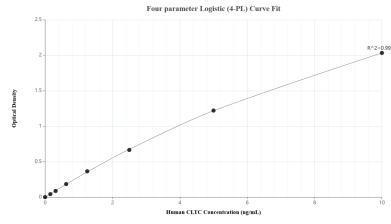
W: ptgcn.com

This product is exclusively available under Proteintech Group brand and is not available to purchase from any other manufacturer.

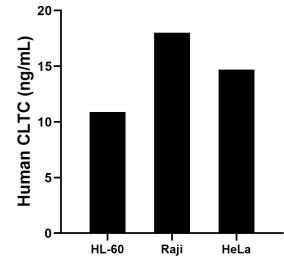
Selected Validation Data



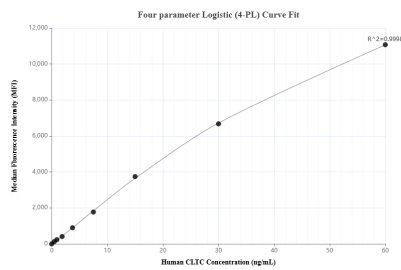
The mean CLTC concentration was determined to be 35.14 ng/mL in HeLa cell extract based on a 1.20 mg/mL extract load.



Sandwich ELISA standard curve of MP02577-1, Human CLTC Recombinant Matched Antibody Pair - PBS only. 86660-2-PBS was coated to a plate as the capture antibody and incubated with serial dilutions of standard Ag25041. 86660-1-PBS was HRP conjugated as the detection antibody. Range: 0.156-10 ng/mL



The mean CLTC concentration was determined to be 10.9 ng/mL in HL-60 cell extract based on a 1.4 mg/mL extract load, 18.0 ng/mL in Raji cell extract based on a 1.3 mg/mL extract load, 14.7 ng/mL in HeLa cell extract based on a 1.1 mg/mL extract load.



Cytometric bead array standard curve of MP02577-1, CLTC Recombinant Matched Antibody Pair, PBS Only. Capture antibody: 86660-2-PBS. Detection antibody: 86660-1-PBS. Standard: Ag25041. Range: 0.469-60 ng/mL