

For Research Use Only

# CLTC Recombinant monoclonal antibody, PBS Only (Detector)

Catalog Number:86660-1-PBS



## Basic Information

Catalog Number: 86660-1-PBS	GenBank Accession Number: BC054489	Purification Method: Protein A purification
Source: Rabbit	GeneID (NCBI): 1213	CloneNo.: 25163489
Isotype: IgG	UNIPROT ID: Q00610	
Immunogen Catalog Number: AG25041	Full Name: clathrin, heavy chain (Hc)	
	Calculated MW: 192 kDa	

## Applications

**Tested Applications:**  
Cytometric bead array, Sandwich ELISA, Indirect ELISA

**Species Specificity:**  
human

## Background Information

### Storage

**Storage:**  
Store at -80°C.  
**The product is shipped with ice packs. Upon receipt, store it immediately at -80°C**

**Storage Buffer:**  
PBS only, pH7.3

For technical support and original validation data for this product please contact:

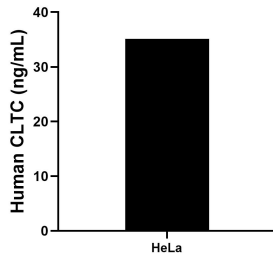
T: 4006900926

E: [Proteintech-CN@ptglab.com](mailto:Proteintech-CN@ptglab.com)

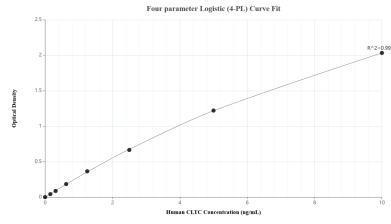
W: [ptgcn.com](http://ptgcn.com)

**This product is exclusively available under Proteintech Group brand and is not available to purchase from any other manufacturer.**

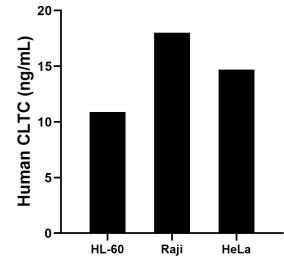
## Selected Validation Data



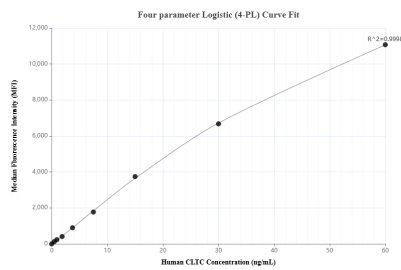
The mean CLTC concentration was determined to be 35.14 ng/mL in HeLa cell extract based on a 1.20 mg/mL extract load.



Sandwich ELISA standard curve of MP02577-1, Human CLTC Recombinant Matched Antibody Pair - PBS only. 86660-2-PBS was coated to a plate as the capture antibody and incubated with serial dilutions of standard Ag25041. 86660-1-PBS was HRP conjugated as the detection antibody. Range: 0.156-10 ng/mL



The mean CLTC concentration was determined to be 10.9 ng/mL in HL-60 cell extract based on a 1.4 mg/mL extract load, 18.0 ng/mL in Raji cell extract based on a 1.3 mg/mL extract load, 14.7 ng/mL in HeLa cell extract based on a 1.1 mg/mL extract load.



Cytometric bead array standard curve of MP02577-1, CLTC Recombinant Matched Antibody Pair, PBS Only. Capture antibody: 86660-2-PBS. Detection antibody: 86660-1-PBS. Standard: Ag25041. Range: 0.469-60 ng/mL