

For Research Use Only

EDG2/LPA1 Recombinant monoclonal antibody

Catalog Number: 86655-2-RR

1 Publications



Basic Information

Catalog Number:

86655-2-RR

Source:

Rabbit

Isotype:

IgG

GenBank Accession Number:

BC030615

GeneID (NCBI):

1902

UNIPROT ID:

Q92633

Full Name:

lysophosphatidic acid receptor 1

Calculated MW:

364 aa, 41 kDa

Observed MW:

50 kDa

Purification Method:

Protein A purification

CloneNo.:

251542A6

Recommended Dilutions:

WB: 1:1000-1:6000

Applications

Tested Applications:

WB, ELISA

Cited Applications:

WB

Species Specificity:

human, mouse

Cited Species:

human

Positive Controls:

WB : HeLa cells, A2780 cells, MG-63 cells, HuH-7 cells, NIH/3T3 cells

Background Information

EDG2 (also known as LPA1) is a G-protein coupled receptor for lysophosphatidic acid (LPA), a potent motility inducing factor, which is a major component of serum (PMID: 19415462). EDG2 is widely expressed in normal tissue during growth and development. In the context of cancer, several studies have suggested that EDG2 expression in tumors is often similar to that shown in normal tissue (PMID: 17496233).

Notable Publications

| Author | Pubmed ID | Journal | Application |
|---------|-----------|---------------|-------------|
| Lin Hao | 41562071 | Front Immunol | WB |

Storage

Storage:

Store at -20°C. Stable for one year after shipment.

Storage Buffer:

PBS with 0.02% sodium azide and 50% glycerol, pH7.3

Aliquoting is unnecessary for -20°C storage

For technical support and original validation data for this product please contact:

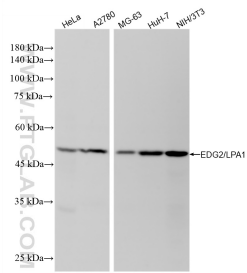
T: 4006900926

E: Proteintech-CN@ptglab.com

W: ptgcn.com

This product is exclusively available under Proteintech Group brand and is not available to purchase from any other manufacturer.

Selected Validation Data



Various lysates were subjected to SDS PAGE followed by western blot with 86655-2-RR (LPAR1,EDG2 antibody) at dilution of 1:3000 incubated at room temperature for 1.5 hours.